

雅 奢 集 团
Y A R D S G R O U P

广州 | 北京 | 成都 | 新疆

12th
2013-2025

12年专注篷房 行业领军品牌
TWELVE YEARS SPECIALISING IN TENTS

EDITORIAL 前言

Yards Group – Leading the Way in Travel and Leisure Spaces.

At Yards Group, design and innovation drive everything we do. From concept and planning to development, production, service, and marketing, we manage the entire product lifecycle, setting trends in vacation accommodations and delivering unforgettable, nature-inspired holiday experiences.

雅奢集团是中国领先的旅居空间创造商，始终以设计与创新为核心驱动力，贯穿产品制造的全过程（创作、规划、开发、生产、服务和营销），引领度假住宿领域新潮流，为用户提供难忘、贴近自然的度假体验。

We partner with a wide range of campgrounds, resorts, and theme parks across China and worldwide. To date, we have proudly produced 11,500 products, now featured in over 5,000 campgrounds and resorts in more than 70 countries, bringing comfort and inspiration to travelers everywhere.

我们与众多中国及全球各地的露营地、度假村和主题公园合作。可以自豪的说，我们已生产了总计 11,500 件产品，这些产品分布在 70 多个国家，5000 多个露营地和度假村中。

SUSTAINABLE DEVELOPMENT

Yards champions sustainability with green building materials certification and china CQC certification. Our products adhere to zero-terrain-disruption principles and achieve 90% material reusability.



可持续发展

雅奢践行可持续理念，公司已通过绿色建材认证及中国质量认证中心 CQC 认证，产品研发遵循“零地貌破坏”原则，材料拆装复用率高达 90%。

MARKET RECOGNITION

Yards has cooperated with many famous resort brands to create new cultural tourism business, and has received their unanimous praise.

市场好评

雅奢曾与众多知名度度假区品牌合作打造新文旅业态，得到了他们的一致好评。

EXCELLENT QUALITY

Yards has state-of-the-art production facilities, and the company is ISO 9001 and CE certified to meet commercial, quality and environmental standards. Our tents have been awarded nearly 100 patents for invention, appearance and utility models.

质量过硬

雅奢拥有最先进的生产设施，公司已通过 ISO 9001 及 CE 认证，符合商业、质量及环境标准。并获得了发明、外观、实用新型等近 200 项专利。



COMMERCE

Mobile Ecological Intelligent
Chain Business Complex

移动生态智慧连锁
商业综合体

TOURISM

Forest-based Wellness &
Resort Complex

Eco-Resort

Boutique B&B

森林康养及
度假综合体

生态度假酒店

精品民宿

Cultural-Tourism
Real Estate Eco-Experience
Center

Cultural Tourism Town

Integrated Tourism
Camping Hub

文旅地产生态
体验中心

文旅小镇

全域旅游共享营地
/ 露营地

VILLAGE

Luxury Rural Regeneration
Retreat

Agro-Tourism Complex &
Shared Farmstead Ecosystem

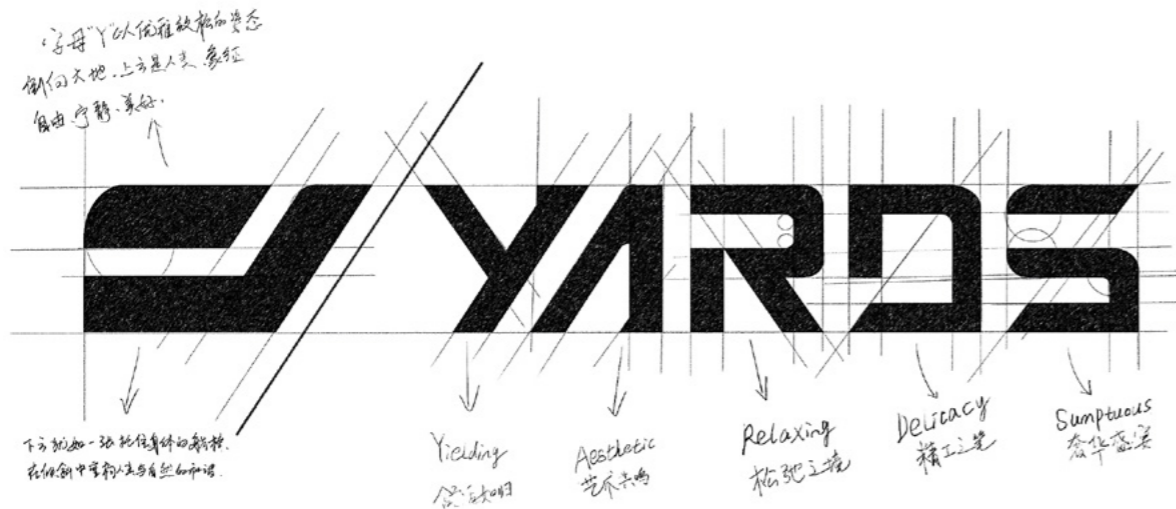
乡村振兴高端生态
旅游度假村

田园综合体及
共享农庄生态

APPLICATIONS

YARDS BRANDS

品牌简介



“YARDS”

Originates from the idea of courtyard, inheriting the poetic core of the English word ‘yard’, and was originally created by brand founder Qidi Wang, aiming to create yielding, aesthetic, relaxing, delicacy, and sumptuous outdoor living spaces in a secluded and picturesque natural place, providing you with a boundless, free and comfortable courtyard vacation experience.

雅奢

源自庭院之思，承英文“院子”的诗意内核，由品牌创始人王启迪先生最初创立，旨在环境清幽、风景如画的自然之地，打造 Yielding（灵活的）、Aesthetic（艺术的）、Relaxing（松弛的）、Delicacy（精致的）、Sumptuous（豪华的）户外生活空间，为您提供无界、自由舒适的庭院度假体验。

EXPANSIVE COURTYARD | LIVING AS YOU WISH.

YARDS·雅奢 | 院纳天地，随心所居

TENT STRUCTURE

旅居空间创领者

Originated in 2013, Yards Holding Group is a technology-based construction company engaged in assembly building research and development, design, production, installation and after-sales service, headquartered in Nansha, Guangzhou.

With a business scope covering four assembly building business segments, namely, tent house, tiny house, safari tent, stretch tent, and the projects are widely used in the fields of culture and tourism, commerce, residence and municipal government.

雅奢控股集团起源于 2013 年，是一家从事装配式建筑研发、设计、生产、安装、售后服务于一体的科技型建筑公司，总部位于广州南沙，业务范围覆盖帐屋 MiC、铝屋 MiC、轻奢帐篷、野奢帐篷四大装配式建筑业务板块，项目广泛应用于文旅、商业、住宅、市政等领域。

12 年行业精耕，我们先后荣获广东省可持续发展企业、南沙优质管理企业、国家知识产权优势企业、国家高新技术企业等荣誉。

SUB-BRAND

旗下子品牌

Offering premium products, cost-effective options, and custom solutions to meet diverse needs.

汇聚高端臻品、高性价比优选与个性化定制服务，以多元产品矩阵满足差异化需求。



Cost-effective and aesthetic tent architecture brand.
雅奢品牌是主打轻奢、野奢高性价比系列产品的帐篷建筑美学品牌。



12-year foreign trade experience recognized by industry.
聚美品牌深耕海外帐篷建筑市场 12 载，以精研技术筑就行业口碑。



Anchor market demand and focus on R&D, innovate high-end tents.
篷派品牌锚定市场需求精研产品，持续革新高端帐篷建筑产品。



Senior design team to provide full project planning and design.
设计院拥有一支资深设计团队，提供项目前期全案规划设计服务。

YARDS HISTORY

发展历程

2013-2014

ESTABLISHMENT

Yards officially commenced operations, adopting an integrated production-sales model, Keep improving our products and tech to build a strong foundation.

成立之初 夯实基础

雅奢正式成立，开始产销一体模式，不断打磨产品与技术，夯实基础。

2015-2016

EXTENSIONS

The business volume has been growing rapidly with more than 100 projects delivered nationwide.

渠道铺设 业务扩展

全方位铺设终端渠道，业务量迅猛增长，全国交付项目突破 100 家。

2017-2018

INNOVATION

Launched R&D to boost smart production, creating an integrated "Innovate-Make-Sell" ecosystem.

自主研发 凝练优势

创立研发设计部门，创新智造助推产能升级，开启“研发-生产-销售”三位一体模式。

2019

BREAKTHROUGHS

Plant II launched (10,000 m²), break through the industry simple tent pattern, open the new mode of light luxury tent.

内外兼修 引领潮向

第二分厂正式投产，占地面积近 10000 m²，突破行业简易帐篷格局，开启轻奢帐篷新模式。

2020-2021

REINFORCE

Joint expert team, the same year to create MIC products obtained over 200 national patents and were awarded the title of National High tech Enterprise.

大咖加持 强强联合

引入专家团队指导工艺研发，同年创研 MIC 产品荣获国家专利 200 余项，获评国家高新技术企业。

2022-2023

GLOBALLY

10 consecutive years of double-digit net profit growth, the business covers 7 major application scenarios, and more than 80 self-developed products are exported to the world.

持续增长 畅销海外

连续 10 年净利润双增长，80 余款自研产品覆盖 7 大应用场景，远销全球 70 多个国家。

2024-2025

UPGRADE

Awarded 3 national invention patents; built 4 major product series after 3 iterations; standardized wisdom manufacturing in the whole process to improve quality and efficiency.

强练内功 品质至上

获评 3 项国家发明专利；历经 3 次迭代构建 4 大产品系列；全流程标准化智造，提质增效。





YARDS SCALE 管理团队

Yards Holding Group was founded on the vision to reconnect urban souls with nature through transformative tent architecture. Upholding our mission to "let architecture grow with nature and life return to its essence," we've assembled an expert team with 10+ years of specialized experience across R&D, planning, and sustainable construction. Our "zero-terrain-disruption" philosophy merges eco-technology with wilderness luxury, creating poetic spaces where humanity and nature harmoniously coexist.

雅奢控股集团的诞生源于想让人们在自然中寻回灵魂的栖息地，我们秉持着“让建筑生长于自然，让生活回归本真”的使命，组建了一支由产品研发、项目规划、生产及施工售后组成的专业团队，团队成员平均拥有10年以上帐篷建筑领域深耕经验。所有的产品开发遵循“零地貌破坏”原则，将野奢美学与绿色环保科技融合，以帐篷建筑为媒介，让每一处空间都成为连接人与自然的诗意栖居。

CORE TEAM

核心成员

From meticulous material selection to precision production, from thoughtful planning to seamless execution, our team upholds the ethos of "crafting extraordinary quality with artistry." Every detail meets exacting standards, ensuring a flawless end-to-end experience for discerning global clients.

12年行业精耕，从材质甄选到生产把控，从前期规划到安装售后，团队秉承“以匠心铸就非凡品质”核心精神，以严苛的标准把控每个环节，构建全链条品质服务体系，旨在为全球高端客户缔造超越期待的品质体验。



MR. WANG | CEO

Founder of yards holding group
雅奢控股集团创始人



MR. CHENG

General Manager 总经理

Responsible for the entire process of material selection-production-quality control
负责产品设计与核心业务



MR. ZHANG

Engineering Manager 总经理

Overall solution to various engineering problems
国内销售及工程部门负责人



MS. LIANG

Director of Foreign Trade
外贸总监

Responsible for overseas market expansion and deep cultivation
主管国际销售及市场



MR. HE

Deputy General Manager
副总经理

Collaborative Production and Supply Chain Management
负责生产管理 & 供应链管理



MR. DU

Senior Product Designer
资深产品设计

Leading the research and development of several ace product lines
主导多个王牌产品线研发



MS. YE

Head of Planning 规划负责人

Leading the planning and design of various projects
主导各类项目规划设计



YARDS SCALE

智造实力

Leveraging advanced equipment, we've established an integrated manufacturing ecosystem spanning raw material procurement, precision component processing, finished product assembly, and logistics. Our multitiered QC system enforces end-to-end standardized production, delivering 8M+ annual unit capacity.

配备先进生产设备，构建起覆盖原材料采购、核心部件加工、成品组装及仓储物流的完善生产制造产业链。建立多层级品控节点，实施全流程标准化生产管理品控体系，平均产能超 800 万。



YARDS SERVICE

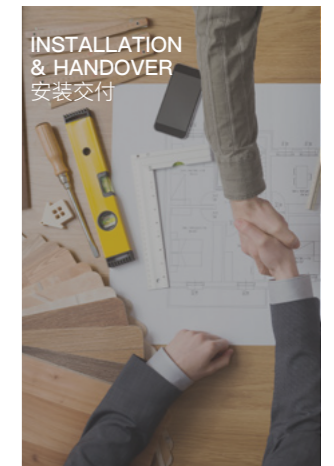
专业服务

We deliver end-to-end project solutions with three flexible installation options: On-site installation by our expert team; Technical guidance for local crews; DIY with instructional kits. All projects come with comprehensive after-sales support for worry-free operation.

提供覆盖项目全周期的一站式解决方案，针对不同项目需求，我们提供三大灵活安装模式：自有专业团队到场安装、指派一名技术人员指导当地施工队安装、提供安装说明 / 安装视频客户自行安装。项目落地后，我们提供完善的售后保障体系，以确保客户无后顾之忧。

SERVICE PROCESS

服务流程



Yards three immersive showrooms (4,000 m² total) feature 1:1 replicas of glamping resorts, enabling clients to experience product performance in real-world settings. Our 50+ design specialists deliver tailored master planning – from product R&D to project execution – through dedicated client engagement.

雅奢设有 4000 m²三大展厅，一比一还原帐篷度假区实地应用场景，让客户沉浸式感受产品落地效果。组建了一支 50 余人的专业设计团队，提供涵盖产品研发、项目规划等一对一全案规划设计服务。



SALES SERVICE

售后保障

- Response within 24 hours after sale
售后 24 小时内响应
- 15 days replacement for quality problems
15 天质量问题包换
- Free non-artificial warranty for 1 year
1 年内非人为免费保修
- Make regular return visits
定期回访
- Regular return visits for lifetime maintenance
终身维修
- Free technical support
免费技术支持
- Provide post-scientific maintenance advice
提供科学保养建议
- Product Iteration Services
产品迭代服务

α SAFARI TENTS
轻奢系列



B40



D28

β STRETCH TENTS
野奢系列



R36



GP28

Ω TENT HOUSE
帐屋系列



M40



XP 32

ψ TINY HOUSE
铝屋系列



LH7



FS

PRODUCT OVERVIEW
产品概览





SAFARI TENTS

轻奢系列

α

The safari series adopts a color palette that blends extremely well with the natural environment and can blend well with outdoor grass, woods and mountain landscapes. The unique triangular appearance not only provides stability, but also embodies the aesthetic value of simplicity and modernity. The main structure is made of imported camphor pine solid wood, and the inner and outer tent materials are made of Oxford cloth and PVC coated cloth, which highlights the beauty of minimalist nature and at the same time, ensures moisture-proof and mildew-proof, wind-resistant and shock-resistant performance.

轻奢系列采用与自然环境极致相融的色调，能够很好地融入户外草地、树林和山地景观，独特的三角形外观不仅具有稳定性，更体现了简洁、现代的美学价值。主体结构采用进口樟子松实木，内外帐材料采用帆布和PVC涂层布，彰显极简自然之美的同时，保证了防潮防霉、抗风抗震的性能。

Luxury tents sourced from YARDS

豪帐篷 雅奢造

YARDS TENTS

轻奢系列总览

5 large models, nearly 14 products, to meet the needs of various scenarios

5 大型号, 近 14 款产品, 满足各类场景需求

A | A15 AX17 AL30



B | B32 B40 BL45



BS | BS35 BS48



E | E32 E40 EC32 EC40



D | D28 DX28



EXTERIOR

Triangular top, khaki tarpaulin, original wooden frame, the overall design is simple and elegant, like the residence of the elves in nature, lightly perched on the emerald green slopes, with the blue sky, white clouds, green grass and flowers to gather together and reflect each other.

简约外观 与自然光相映成趣

三角形顶部、卡其色篷布、原木色框架，整体设计简洁优雅，如同大自然中的精灵居所，轻盈地栖息在翠绿的山坡上，与蓝天白云、绿草繁花相聚一堂，相映成趣。

- 90mm solid pinewood frame structure, not easy to deform, protect paint anti-corrosion
- PVC-coated outer flysheet, flame-retardant and UV-resistant; Oxford cloth inner tent, abrasion-resistant and mould-proof.
- Stable triangular structure, three-dimensional slop design, avoid accumulation of water and snow
- Strong stability, high wind resistance and earthquake resistance, service term 10 years
- 90 毫米进口樟子松实木框架，不易变形，保护漆防腐蚀
- PVC 涂层外帐布，阻燃抗 UV；牛津布内帐，耐磨防霉
- 稳固三角结构，立体化坡度设计防积水、防积雪
- 强稳定性，抗风 8 级，抗震 7 级，10 年使用寿命





· PRODUCT INTERNAL DISPLAY · 产品内部展示

INTERIOR

The interior layout is square, with a bathroom, leisure area and rest area and other functional areas; quiet and easy-going log style, with the beauty of clean and pure, mostly one door and four windows design, to ensure ventilation and lighting and privacy.

舒适原木 自然慢生活

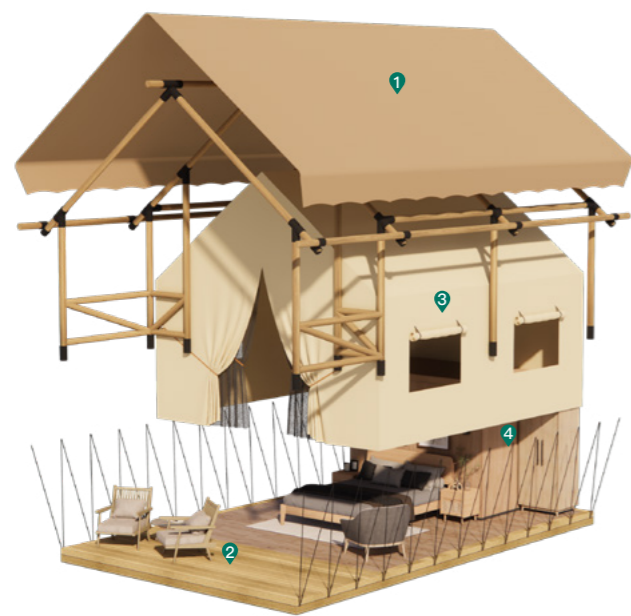
内部方正布局，设有卫生间、休闲区与休息区等功能区；恬静随和的原木风格，美得干净纯粹，多为一门四窗设计，保证通风采光与私密性。

- Functional areas such as rest area, recreation area and restroom can be set up, and some products are designed on two floors.
- Three-layer tarpaulin design for windows: waterproof PVC tarpaulin, anti-mosquito screen curtains, blackout Oxford cloth.

- 可设休息区、娱乐区、卫生间等功能区，部分产品两层设计
- 窗户三层篷布设计：防水PVC篷布、防蚊纱帘、遮阳牛津布

QUALITY MATERIALS SOURCE OF COMFORT

优质选材 舒适之源

**1 PREFAB STRUCTURE**

装配式结构

- Outer Roofing: 850g PVC-Coated Clth.
外层屋面: 850G PVC 涂层布
- Inner Roofing: 370G Oxford Cloth.
内层屋面: 370G 牛津布
- Main Struct.: Paint-Coated Steel or Wood Struct.
主体结构: 烤漆钢材或木结构

2 PREFAB FLOOR

装配式地面

- Indoor Flooring: Spc Waterproof / Multi-Layer Solid Wood Flooring (Opt.)
室内地板: SPC 防水地板 / 多层实木地板 (可选)
- Load-Bearing Plate: 20mm Cement Bd.
承重板: 20MM 水泥板
- Outdoor Flooring: Anti-Corrosion Wood / Wpc Outdoor Wood Flooring (Opt.)
户外地板: 防腐木地板 / WPC 户外木地板 (可选)
- Platform Struct.: Galvanized Steel
平台结构: 镀锌钢材

3 INTEGRATED WALL

一体化墙体



- Window: PVC Transp. Fabric (Outer)
Mosq.-Proof Screen Curtain
窗户: PVC 透明布 (外层)
防蚊纱帘
- Curtain: Semi-Shading Canvas (Inner)
窗帘: 半遮光帆布 (内层)
- Wall: 370G Oxford Cloth
墙体: 370G 牛津布

4 INTEGRATED BATHROOM

一体化卫生间



- Wall: Waterproof Panel
墙板: 防水饰面板
- Door: Glass / Composite Wood (opt.)
门: 玻璃门 / 复合木门 (可选)
- Ceiling: Decorative Panel / Exhaust Fan / Lighting Lamp
天花: 饰面板 / 排气扇 / 照明灯
- Floor: Waterproof Tray
地面: 防水托盘 / 石纹地砖
- Bth. Fix.: Washbasin / Mirror / Toilet / Shower
卫浴设施: 洗手台 / 镜子 / 坐便器 / 花洒

PERFORMANCE

性能特点

Inst. Time: 1 Days
安装时间: 1 天Service Life: 10 Years
使用年限: 10 年Wind Resist.: Level 8
抗风等级: 8 级Flame Retardant: B1
防火阻燃: B1Clim. Adapt.: 0°C ~ 40°C
适应气候: 0°C ~ 40°CMoisture-proof & Mildew-proof
防潮防霉

KHAKI/ 卡其

1 MAIN MATERIAL

主体

2 FLOOR MATERIAL

地面

3 WALL MATERIAL

墙体



BEIGE/ 米黄

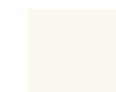


BROWN/ 褐色

1 MAIN MATERIAL

主体

Roof Tarpaulin | 屋面篷布

White
白色Beige
米黄Khaki
卡其Light brown
浅咖色Brown
褐色Green
墨绿色

Main Structure | 主体结构

Scots pine wood
樟子松实木Steel Pipe
喷涂钢管**2 FLOOR MATERIAL**

地面

WPC Flr. / Solid Wood Flr. | WPC 地板 / 实木地板

胡桃木
Walnut柚木
Shaddock樟子松木
Scots pine wood**3 WALL MATERIAL**

墙体

INNER FABRIC | 内帐

Khaki
卡其Off-White
米白Quicksand gold
流沙金

ENTRANCE DOOR | 入户门

Canvas
篷布Glass Door
玻璃门

CONFIGURABLE

多元配置可选

● Standard ▲ Hardcover ■ Deluxe

Structure: Steel-wood structure, includes nodes & accessories	●	▲	■
Canopy: PVC outer tent; Oxford fabric inner tent; inner canvas with fixed fabric accessories	●	▲	■
Doors and Windows: canvas door; waterproof zippers; fabric curtain windows; includes mosquito-proof mesh doors and windows	●	▲	■
Bathroom: Composite wall decoration; shower waterproof tray; glass partition; composite door; Plumbing System; main electrical box; switch & socket panels; lighting		▲	■
Sanitary Ware: Vanity/mirror; toilet; shower; shelves, etc.		▲	■
Flooring: solid wood floor; baseboard		▲	■
Furniture: Solid wood bed with mattress; bedside table; sofa table set; wardrobe; side cabinet			■
Appliances: Air conditioner 2P; water heater 60L; lighting fixtures			■
Bedding: Quilt; pillow; 4-piece set (hotel standard)			■
Amenities: Toiletries; bath/towels; bathrobe; trash bin; storage box; hairdryer (first-tier brands), etc.			■
Glass Door: Aluminum Alloy Single-Pane 6mm Glass Door; solid wood frame; electronic lock			■
Platform: Galvanized steel structure; anti-corrosion wood plank & WPC decking			■



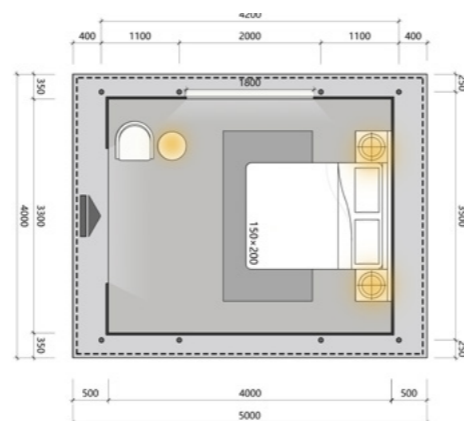
● 标准 ▲ 精装 ■ 豪华

结构: 钢木结构; 含节点及配件	●	▲	■
篷布: PVC 外帐; 牛津布内帐; 含固定篷布配件	●	▲	■
门窗: 帆布门; 防水拉链; 布帘窗户; 含防蚊布纱门窗	●	▲	■
精装卫生间: 外内装饰复合墙体; 淋浴间防水托盘; 玻璃隔断; 复合门; 上下水系统; 总电箱; 开关插座面板; 照明灯		▲	■
卫浴设施: 洗漱台 / 镜子; 坐便器; 花洒; 置物架		▲	■
地板: 实木地板; 地脚线		▲	■
家具: 实木床含床垫; 床头柜; 沙发桌椅; 衣物柜; 边柜			■
电器: 空调 2P; 热水器 60L; 灯具			■
床品: 棉被; 枕芯; 四件套等 (酒店标准)			■
用品: 洗漱品; 浴 / 毛巾; 浴袍; 垃圾桶; 储物盒; 吹风机 (一线品牌)			■
玻璃门: 6mm 单层铝合金玻璃门; 实木门框; 电子锁			■
平台: 镀锌钢结构; 防腐木地板; 木塑地板			■



LAYOUT

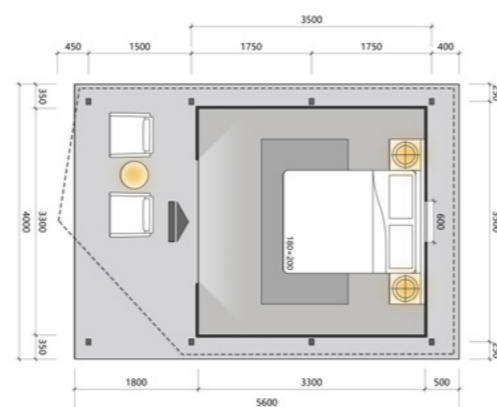
空间布局



A15 DIMENSIONS | 产品参数

- MAIN DIMENSION: 3.5m*4.2m
- INTERIOR AREA: 13m²
- INTERIOR DIMENSIONS: 3.3m*4m
- TERRACE AREA: 2m²
- EXTERNAL HEIGHT: 2.8m
- INTERNAL HEIGHT: 2.5m

- 主体尺寸: 3.5m*4.2m
- 室内面积: 13m²
- 室内尺寸: 3.3m*4m
- 露台面积: 2m²
- 外部高度: 2.8m
- 内部高度: 2.5m



AX17 DIMENSIONS | 产品参数

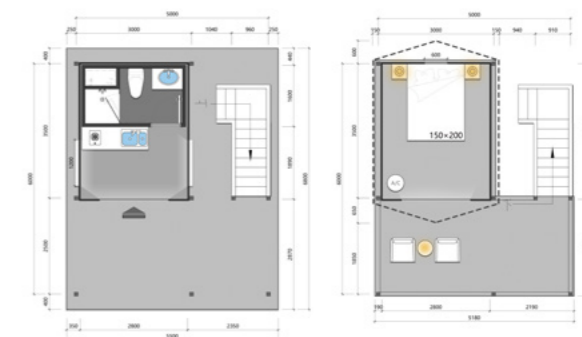
- MAIN DIMENSION: 3.5m*5m
- INTERIOR AREA: 11m²
- INTERIOR DIMENSIONS: 3.3m*3.3m
- TERRACE AREA: 5m²
- EXTERNAL HEIGHT: 3.2m
- INTERNAL HEIGHT: 2.9m

- 主体尺寸: 3.5m*5m
- 室内面积: 11m²
- 室内尺寸: 3.3m*3.3m
- 露台面积: 5m²
- 外部高度: 3.2m
- 内部高度: 2.9m

LAYOUT

空间布局

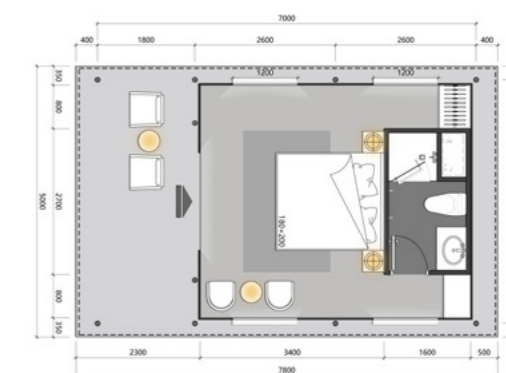
豪帐篷 雅奢造 Luxury tents sourced from YARDS



AL30 DIMENSIONS | 产品参数

- MAIN DIMENSION: 5m*6m
- INTERIOR AREA: L1/9.8m²、L2/9.2m²
- INTERIOR DIMENSIONS: 3.5m*2.8m
- TERRACE AREA: 12+12m²
- EXTERNAL HEIGHT: 2.8m
- INTERNAL HEIGHT: 2.5m

- 主体尺寸: 5m*6m
- 室内面积: L1/9.8m²、L2/9.2m²
- 室内尺寸: 3.5m*2.8m
- 露台面积: 12+12m²
- 外部高度: 2.8m
- 内部高度: 2.5m



B32 DIMENSIONS | 产品参数

- MAIN DIMENSION: 4.5m*7m
- INTERIOR AREA: 22m²
- INTERIOR DIMENSIONS: 4.3m*5m
- TERRACE AREA: 8m²
- EXTERNAL HEIGHT: 4.2m/2.1m
- INTERNAL HEIGHT: 3.9m/2m

- 主体尺寸: 4.5m*7m
- 室内面积: 22m²
- 室内尺寸: 4.3m*5m
- 露台面积: 8m²
- 外部高度: 4.2m/2.1m
- 内部高度: 3.9m/2m

LAYOUT

空间布局



B40 DIMENSIONS | 产品参数

- MAIN DIMENSION: 5m*8m
- INTERIOR AREA: 25m²
- INTERIOR DIMENSIONS: 4.8m*5.2m
- TERRACE AREA: 13m²
- EXTERNAL HEIGHT: 4.5m/2.1m
- INTERNAL HEIGHT: 4.2m/2m

- 主体尺寸: 5m*8m
- 室内面积: 25m²
- 室内尺寸: 4.8m*5.2m
- 露台面积: 13m²
- 外部高度: 4.5m/2.1m
- 内部高度: 4.2m/2m



BL45 DIMENSIONS | 产品参数

- MAIN DIMENSION: 5m*9m
- INTERIOR AREA: L1/31 m²、L2/20 m²
- INTERIOR DIMENSIONS: 4.8m*6.4m
- TERRACE AREA: 12m²+11m²
- EXTERNAL HEIGHT: 5m
- INTERNAL HEIGHT: 2.2m

- 主体尺寸: 5m*9m
- 室内面积: L1/31 m²、L2/20 m²
- 室内尺寸: 4.8m*6.4m
- 露台面积: 12m²+11m²
- 外部高度: 5m
- 内部高度: 2.2m

LAYOUT

空间布局



BS35 DIMENSIONS | 产品参数

- MAIN DIMENSION: 5m*6.8m
- INTERIOR AREA: 23m²
- INTERIOR DIMENSIONS: 4.8m*4.8m
- TERRACE AREA: 15.9m²
- EXTERNAL HEIGHT: 4.3m/2.5m
- INTERNAL HEIGHT: 4m/2.4m

- 主体尺寸: 5m*6.8m
- 室内面积: 23m²
- 室内尺寸: 4.8m*4.8m
- 露台面积: 15.9m²
- 外部高度: 4.3m/2.5m
- 内部高度: 4m/2.4m



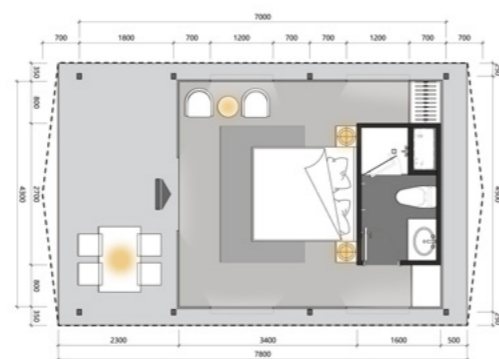
BS48 DIMENSIONS | 产品参数

- MAIN DIMENSION: 6m*8m
- INTERIOR AREA: 34m²
- INTERIOR DIMENSIONS: 5.8m*5.8m
- TERRACE AREA: 16m²
- EXTERNAL HEIGHT: 4.3m/2.5m
- INTERNAL HEIGHT: 4m/2.4m

- 主体尺寸: 6m*8m
- 室内面积: 34m²
- 室内尺寸: 5.8m*5.8m
- 露台面积: 16m²
- 外部高度: 4.3m/2.5m
- 内部高度: 4m/2.4m

LAYOUT

空间布局



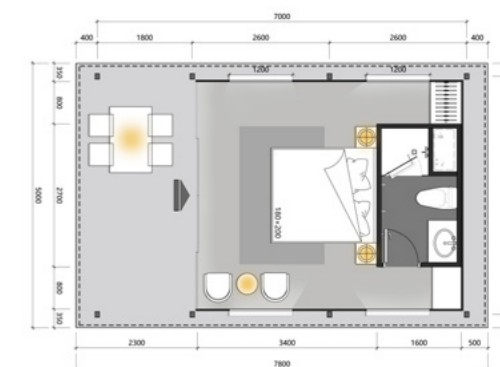
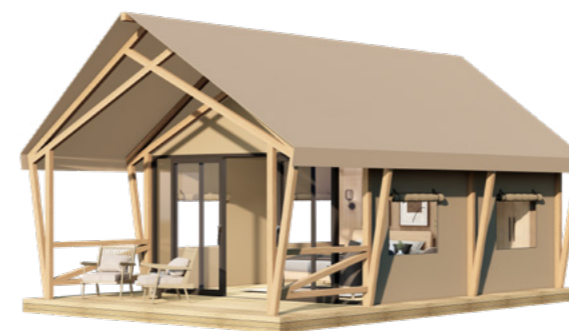
E32 DIMENSIONS | 产品参数

- MAIN DIMENSION: 4.5m*7m
- INTERIOR AREA: 21.5m²
- INTERIOR DIMENSIONS: 4.3m*5m
- TERRACE AREA: 8.1m²
- EXTERNAL HEIGHT: 4m/2.2m
- INTERNAL HEIGHT: 3.3m/2.1m

- 主体尺寸: 4.5m*7m
- 室内面积: 21.5m²
- 室内尺寸: 4.3m*5m
- 露台面积: 8.1m²
- 外部高度: 4m/2.2m
- 内部高度: 3.3m/2.1m

LAYOUT

空间布局



EC32 DIMENSIONS | 产品参数

- MAIN DIMENSION: 4.5m*7m
- INTERIOR AREA: 22m²
- INTERIOR DIMENSIONS: 4.3m*5m
- TERRACE AREA: 8m²
- EXTERNAL HEIGHT: 4m/2.2m
- INTERNAL HEIGHT: 3.3m/2.1m

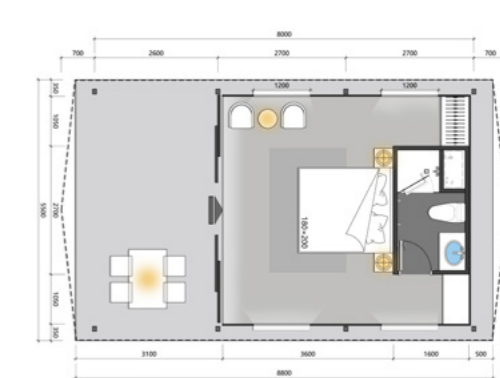
- 主体尺寸: 4.5m*7m
- 室内面积: 22m²
- 室内尺寸: 4.3m*5m
- 露台面积: 8m²
- 外部高度: 4m/2.2m
- 内部高度: 3.3m/2.1m



E40 DIMENSIONS | 产品参数

- MAIN DIMENSION: 5m*8m
- INTERIOR AREA: 25m²
- INTERIOR DIMENSIONS: 4.8m*5.2m
- TERRACE AREA: 13m²
- EXTERNAL HEIGHT: 4m/2.2m
- INTERNAL HEIGHT: 3.7m/2.1m

- 主体尺寸: 5m*8m
- 室内面积: 25m²
- 室内尺寸: 4.8m*5.2m
- 露台面积: 13m²
- 外部高度: 4m/2.2m
- 内部高度: 3.7m/2.1m



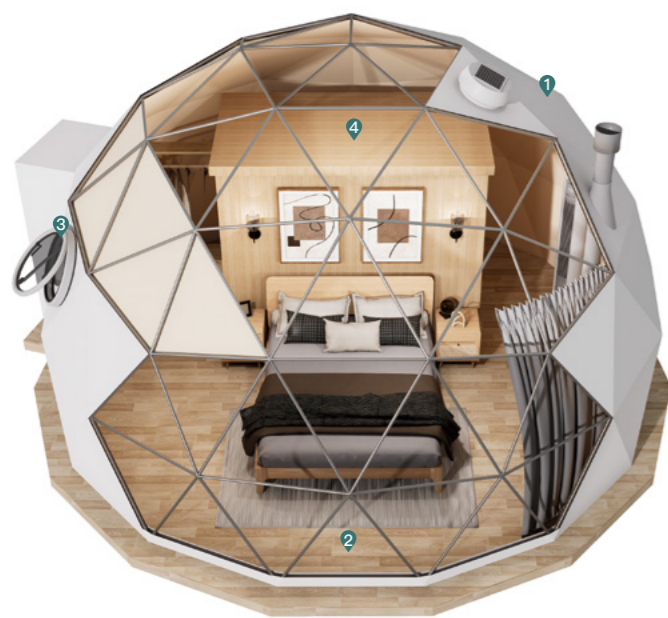
EC40 DIMENSIONS | 产品参数

- MAIN DIMENSION: 5m*8m
- INTERIOR AREA: 25m²
- INTERIOR DIMENSIONS: 4.8m*5.3m
- TERRACE AREA: 13m²
- EXTERNAL HEIGHT: 4m/2.2m
- INTERNAL HEIGHT: 3.3m/2.1m

- 主体尺寸: 5m*8m
- 室内面积: 25m²
- 室内尺寸: 4.8m*5.3m
- 露台面积: 13m²
- 外部高度: 4m/2.2m
- 内部高度: 3.3m/2.1m

QUALITY MATERIALS SOURCE OF COMFORT

优质选材 舒适之源



1 PREFAB STRUCTURE

装配式结构

- Outer Roofing: 850g PVC-Coated Clth.
外层屋面: 850G PVC 涂层布
- Insulation Lining: Alu-Foil Comp. Oxford Fab.
内层屋面: 铝箔复合牛津布
- Main Struct.: Paint-Coated Steel or Al Alloy Struct.
主体结构: 烤漆钢材或铝合金结构

2 PREFAB FLOOR

装配式地面

- Indoor Flooring: Spc Waterproof / Multi-Layer Solid Wood Flooring (Opt.)
室内地板: SPC 防水地板 / 多层实木地板 (可选)
- Load-Bearing Plate: 20mm Cement Bd.
承重板: 20MM 水泥板
- Outdoor Flooring: Anti-Corrosion Wood / Wpc Outdoor Wood Flooring (Opt.)
户外地板: 防腐木地板 / WPC 户外木地板 (可选)
- Platform Struct.: Galvanized Steel
平台结构: 镀锌钢材

4 INTEGRATED BATHROOM

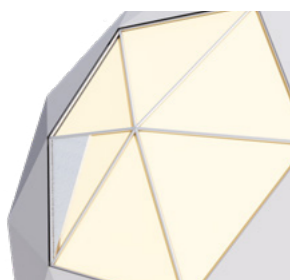
一体化卫生间



- Wall: Waterproof Panel
墙板: 防水饰面板
- Door: Glass / Composite Wood (opt.)
门: 玻璃门 / 复合木门 (可选)
- Ceiling: Decorative Panel / Exhaust Fan / Lighting Lamp
天花: 饰面板 / 排气扇 / 照明灯
- Floor: Waterproof Tray
地面: 防水托盘 / 石纹地砖
- Bth. Fix.: Washbasin / Mirror / Toilet / Shower
卫浴设施: 洗手台 / 镜子 / 坐便器 / 花洒

3 OPT. CONFIG.

可选配置



- Large Window: 950G-PVC-Coated Clth. / 5+9a+5mm Insulated Glass
透明部分: 950G-PVC 涂层布 / 5+9a+5mm 中空玻璃
- Air Vent: Tarpaulin / Solar (Opt)
排气口: 篷布排气口 / 太阳能排气口 (可选)
- Supp. Fac.: Glass Door / Window / Wood-Burn. Fireplace
配套设施: 玻璃门 / 玻璃窗 / 真火壁炉

PERFORMANCE

性能特点



Inst. Time: 1 Days
安装时间: 1天



Service Life: 15 Years
使用年限: 15年



Wind Resist.: Level 11
抗风等级: 11级



Flame Retardant: B1
防火阻燃: B1



Clim. Adapt.: -20°C ~ 50°C
适应气候: -20°C ~ 50°C



Moisture-proof & Mildew-proof
防潮防霉



WHITE/ 白色

1 MAIN MATERIAL

主体

2 FLOOR MATERIAL

地面

3 CONFIGURATION

配置



KHAKI/ 卡其

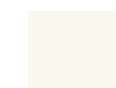


GREEN/ 墨绿色

1 MAIN MATERIAL

主体

Roof Tarpaulin | 屋面篷布



White
白色



Beige
米黄



Khaki
卡其



Light brown
浅咖色



Brown
褐色



Green
墨绿色

Main Structure | 主体结构



Steel Pipe
喷涂钢管



Romany purple
铝合金

2 FLOOR MATERIAL

地面

WPC Flr. / Solid Wood Flr. | WPC 地板 / 实木地板



胡桃木
Walnut



柚木
Shaddock



樟子松木
Scots pine wood

3 CONFIGURATION

配置

Air Vent | 排气口



Tarpaulin
篷布排气口



Solar Energy
太阳能排气口

Supporting Facilities | 配套设施



Glass Door
玻璃门



Tarpaulin Windows
真火壁炉



Glass Window
玻璃窗户 (圆形 / 三角形)

CONFIGURABLE

多元配置可选

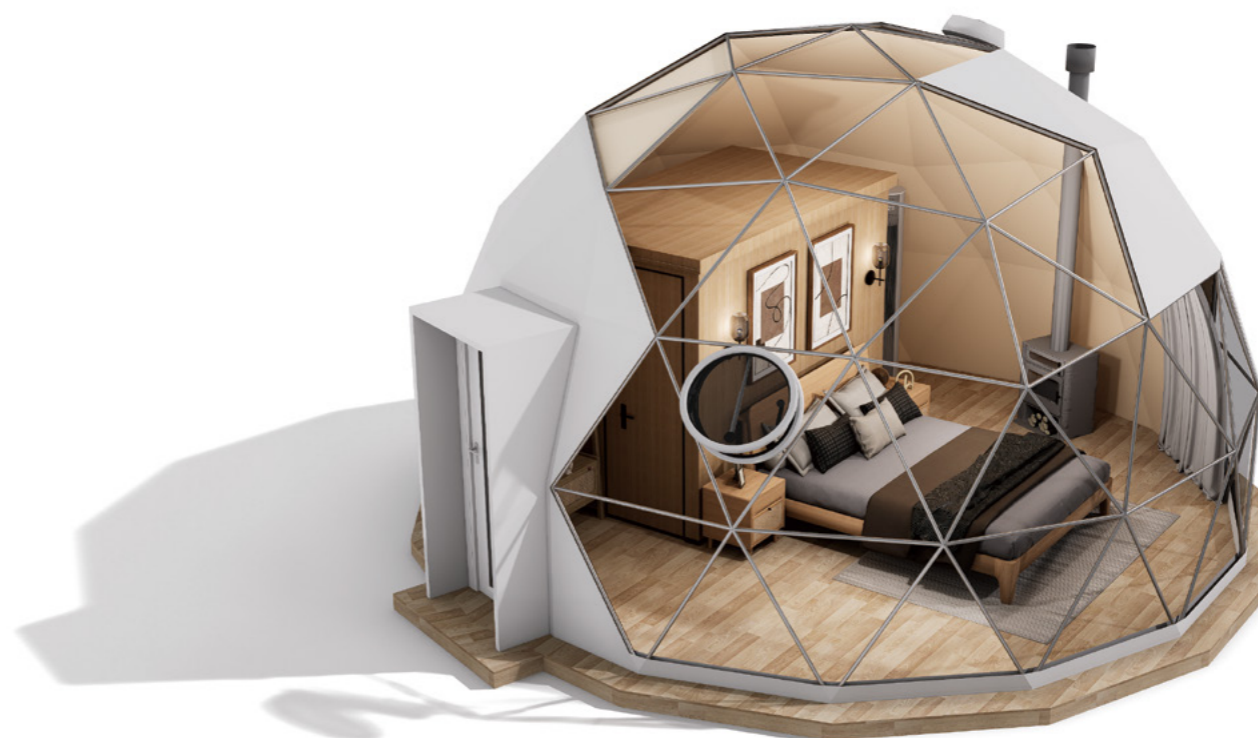
● Standard ▲ Hardcover ■ Deluxe

Structure: Galvanized round pipe; includes nodes & accessories	●	▲	■
Canopy: PVC outer tent; inner canvas with fixed fabric accessories	●	▲	■
Interior: Alu-foil oxford composite		▲	■
Doors & Windows: Door frame; Glass door; Fabric window; Glass window (round/triangular); Motorized skylight shade		▲	■
Bathroom: Waterproof wall finishes (internal & external); shower area waterproof flooring; composite door; suspended ceiling; lighting; water supply and drainage system; main electrical panel; switch & socket panels.		▲	■
Sanitary Ware: Vanity/mirror; toilet; shower; shelves, etc.		▲	■
Supporting Facilities: Tarpaulin vent; Solar-powered exhaust fan; Wood-burning fireplace		▲	■
Flooring: solid wood floor; baseboard		▲	■
Furniture: Solid wood bed with mattress; bedside table; sofa table set; wardrobe; side cabinet; Curtains			■
Appliances: Air conditioner; water heater; lighting fixtures			■
Bedding: Quilt; pillow; 4-piece set (hotel standard)			■
Amenities: Toiletries; bath/towels; bathrobe; trash bin; storage box; hairdryer (first-tier brands), etc.			■
Platform: Galvanized steel structure; anti-corrosion wood plank & WPC decking			■



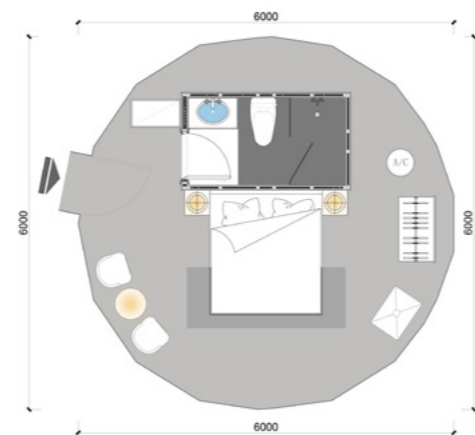
● 标准 ▲ 精装 ■ 豪华

结构: 镀锌圆管; 含节点及配件	●	▲	■
篷布: PVC 外帐; 含固定篷布配件	●	▲	■
内饰: 铝箔牛津布复合内饰		▲	■
门窗: 门框; 玻璃门; 篷布窗户; 玻璃窗户 (圆 / 三角形); 电动天窗帘		▲	■
精装卫生间: 外内装饰防水墙体; 淋浴间防水地面; 复合门; 天花吊顶; 照明灯; 上下水系统; 总电箱; 开关插座面板		▲	■
卫浴设施: 洗漱台 / 镜子; 坐便器; 花洒; 置物架		▲	■
配套设施: 篷布排气口; 太阳能排气扇; 真火壁炉		▲	■
地板: 实木地板; 地脚线		▲	■
家具: 实木床含床垫; 床头柜; 沙发桌椅; 衣物柜; 边柜; 窗帘			■
电器: 空调; 热水器; 灯具			■
床品: 棉被; 枕芯; 四件套等 (酒店标准)			■
用品: 洗漱品; 浴 / 毛巾; 浴袍; 垃圾桶; 储物盒; 吹风机 (一线品牌)			■
平台: 镀锌钢结构; 防腐木地板; 木塑地板			■



LAYOUT

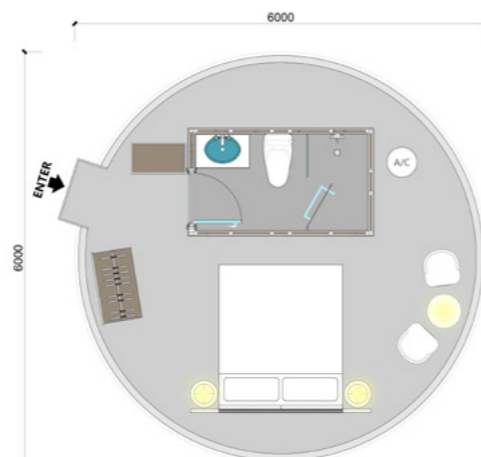
空间布局



D28 DIMENSIONS | 产品参数

- MAIN MATERIAL: GALVANIZED PIPE & PVC FABRIC
- MAIN DIMENSION: $\Phi 6m$
- INTERIOR AREA: $28 m^2$
- TOP HEIGHT: 3.5m
- OTHER SIZE: $\Phi 5m (20 m^2)$ | $\Phi 7m (38 m^2)$ | $\Phi 8m (50 m^2)$ | $\Phi 9m (64 m^2)$ | $\Phi 10m (79 m^2)$

- 主体材料: 镀锌管 + PVC 篷布
- 主体尺寸: $\Phi 6m$
- 室内面积: $28m^2$
- 顶部高度: 3.5m
- 其它规格: $\Phi 5m(20 m^2)$ | $\Phi 7m (38 m^2)$ | $\Phi 8m (50 m^2)$ | $\Phi 9m (64 m^2)$ | $\Phi 10m (79 m^2)$



DX28 DIMENSIONS | 产品参数

- MAIN MATERIAL: ALUMINUM FRAME & INSULATING GLASS PANEL & ALUMINUM PLATE
- MAIN DIMENSION: $\Phi 6m$
- INTERIOR AREA: $28m^2$
- TOP HEIGHT: 3.5m
- OTHER SIZE: $\Phi 5m(20 m^2)$ | $\Phi 7m (38 m^2)$ | $\Phi 8m (50 m^2)$ | $\Phi 9m (64 m^2)$ | $\Phi 10m (79 m^2)$

- 主体材料: 铝合金框 + 中空玻璃 + 铝合金板
- 主体尺寸: $\Phi 6m$
- 室内面积: $28m^2$
- 顶部高度: 3.5m
- 其它规格: $\Phi 5m(20 m^2)$ | $\Phi 7m (38 m^2)$ | $\Phi 8m (50 m^2)$ | $\Phi 9m (64 m^2)$ | $\Phi 10m (79 m^2)$





STRETCH TENTS

野奢系列



Stretch Tents originated in South Africa and is inspired by the need for 'modern and original' travel that blends modern civilisation with pristine landscapes. Outdoor is the wild scenery of nature, which can not be seen unless it is the world's most beautiful scenery; indoor is a warm and luxurious environment. Its design principle breaks the pattern of purely linear architectural style, with its unique beautiful curved surface modelling, presenting a perfect combination of simplicity, brightness, rigidity and softness, strength and beauty, giving people more space for imagination and creation.

野奢系列起源于南非，其设计灵感来源于将现代文明与原始景观完美融合的“现代原生态”旅行需求。室外是大自然的野性风貌，非旷世绝美之风景不能入眼；室内则是温馨奢华的环境。其设计原理打破了纯直线建筑风格的模式，以其独有的优美曲面造型，呈现出简洁、明快、刚与柔、力与美的完美组合，给人更大的想象和创造空间。

Luxury tents sourced from YARDS

豪帐篷 雅奢造

YARDS TENTS

野奢系列总览

Four series, nearly 18 products, to meet the needs of various scenes.
四大系列，近 18 款产品，满足各类场景需求。

R | R24 R36 R60



RT | RT32 RT40 RT87



K | K100 K145 K190



G | G28 G38



GP | GP28 GP38



T | T26 T35



TP | TP26 TP35 TP50



EXTERIOR

The overall shape is the original beauty of unrestrained, like an eagle spreading its wings and soaring. The unique multi-wave spire is not only an aesthetic visual enjoyment, but also expands the internal space in an intangible way, so that there is no sense of oppression when people move around in it.

原始不羁之形，舒稳庇护之境

整体造型是张扬不羁的原始之美，如雄鹰展翅翱翔。独具匠心的多波浪尖顶，不仅是视觉上的美学享受，更在无形中拓展了内部空间，让人在其中活动时毫无压抑之感。

- Multi-door and window design, good light transmission and wide view.
- Wave tip roof slope design, drainage and windproof.
- Double-layer of external fabric, moisture-proof and mould-proof, heat insulation and sun protection.
- 多门窗设计，透光性佳，视野开阔，零距离奢享自然；
- 波浪尖顶坡度设计，避免积水，分散风力，提升稳定性；
- 网格布 -PVDF 双层外帐设计，防潮防霉，隔热防晒。





· 产品内部展示 · PRODUCT INTERNAL DISPLAY

INTERIOR

Stepping into the tent, the elegant inner tent and comfortable home reflect each other, and the outdoor green mountains, green water, grass and warblers like a dynamic scroll, telling the harmonious music of man and nature.

野趣居所 品质与自然共生

踏入帐篷,质朴的材质与细腻的工艺相得益彰,生态雅致的内帐与古朴舒适的家居相映成趣,户外的青山绿水、草长莺飞如一幅动态画卷,诉说着人与自然的和谐乐章。

- Square house type, wide terrace, high space utilisation rate, 10-year service life.
- Φ90 mm camphor pine support frame, painted to protect against corrosion.
- Equipped with anti-mosquito door screen and window screen to isolate mosquitoes in the field.
- 户型方正,露台阔绰,空间使用率高,保障10年使用寿命。
- Φ90毫米进口樟子松支撑架,源材耐用、涂装保护漆防腐蚀。
- 配备高密度防蚊门纱、窗纱,隔绝野外蚊虫。

QUALITY MATERIALS SOURCE OF COMFORT

优质选材 舒适之源



1 PREFAB STRUCTURE

装配式结构

- 1st Roof: Mesh Cloth
一层屋面: 网格布
- 2st Roof: 550g Canvas/PVC Fabric /1050g PVDF Arch. Membrane*
二层屋面: 550G 帆布/PVC布/1050G PVDF 膜材*
- Inner Roofing: 420g Canvas + Fabric Ceiling
内层屋面: 420G 帆布 + 布艺吊顶
- Main Struct.: Paint-Coated Steel or Wood Struct.
主体结构: 烤漆钢材或木结构

2 PREFAB FLOOR

装配式地面

- Indoor Flooring: Spc Waterproof / Multi-Layer Solid Wood Flooring (Opt.)
室内地板: SPC 防水地板 / 多层实木地板 (可选)
- Load-Bearing Plate: 20mm Cement Bd.
承重板: 20MM 水泥板
- Outdoor Flooring: Anti-Corrosion Wood / Wpc Outdoor Wood Flooring (Opt.)
户外地板: 防腐木地板 / WPC 户外木地板 (可选)
- Platform Struct.: Galvanized Steel
平台结构: 镀锌钢材

3 INTEGRATED WALL

一体化墙体



- Window: PVC Transp. Fabric (Outer) Mosq.-Proof Screen Curtain
窗户: PVC 透明布 (外层) 防蚊纱帘
- Curtain: Semi-Shading Canvas (Inner)
窗帘: 半遮光帆布 (内层)
- Wall: PVC Cloth
墙体: PVC 布

4 INTEGRATED BATHROOM

一体化卫生间



- Wall: Waterproof Panel
墙板: 防水饰面板
- Door: Glass / Composite Wood (opt.)
门: 玻璃门 / 复合木门 (可选)
- Ceiling: Decorative Panel / Exhaust Fan / Lighting Lamp
天花: 饰面板 / 排气扇 / 照明灯
- Floor: Waterproof Tray
地面: 防水托盘 / 石纹地砖
- Bth. Fix.: Washbasin / Mirror / Toilet / Shower
卫浴设施: 洗手台 / 镜子 / 坐便器 / 花洒

PERFORMANCE

性能特点



Inst. Time: 2-4 Days
安装时间: 2-4 天



Service Life: 10 Years
使用年限: 10 年



Wind Resist.: Level 8
抗风等级: 8 级



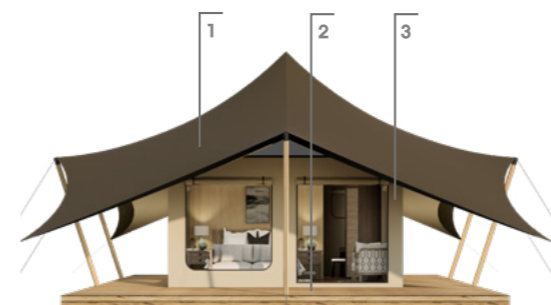
Flame Retardant: B1
防火阻燃: B1



Clim. Adapt.: 0°C ~ 40°C
适应气候: 0°C ~ 40°C



Moisture-proof & Mildew-proof
防潮防霉



BROWN/ 褐色

1 MAIN MATERIAL

主体

2 FLOOR MATERIAL

地面

3 WALL MATERIAL

墙体



KHAKI/ 卡其色

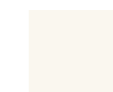


BLACK/ 黑色

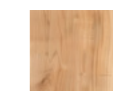
1 MAIN MATERIAL

主体

Roof Tarpaulin | 屋面篷布

White
白色Black
黑色Khaki
卡其

Main Structure | 主体结构

Scots pine wood
樟子松实木Steel Pipe
喷涂钢管

2 FLOOR MATERIAL

地面

WPC Flr. / Solid Wood Flr. | WPC 地板 / 实木地板

胡桃木
Walnut柚木
Shaddock樟子松木
Scots pine wood

3 WALL MATERIAL

墙体

INNER FABRIC | 内帐

Khaki
卡其Off-White
米白Quicksand gold
流沙金

ENTRANCE DOOR | 入户门

Canvas
篷布Glass Door
玻璃门

CONFIGURABLE

多元配置可选

● Standard ▲ Hardcover ■ Deluxe

Structure: Steel-wood structure, includes nodes & accessories	●	▲	■
Canopy: PVDF outer tent; canvas inner tent; inner canvas with fixed fabric accessories	●	▲	■
Doors and Windows: Canvas door; waterproof zippers; fabric curtain windows; includes mosquito-proof mesh doors and windows	●	▲	■
Bathroom: Composite wall panels; waterproof flooring; solid wood door; ceiling; lighting		▲	■
Sanitary Ware: Vanity/mirror; toilet; shower; shelves, etc.		▲	■
Water & Electricity: Plumbing System; main electrical box; switch & socket panels		▲	■
Flooring: solid wood floor; baseboard		▲	■
Furniture: Solid wood bed with mattress; bedside table; sofa table set; wardrobe; side cabinet; curtains; blinds			■
Appliances: Air conditioner; water heater; lighting fixtures			■
Furniture: solid wood bed/cushion;sofa table set;clothes rack;curtains; carpet.			■
Bedding: Quilt; pillow; 4-piece set (hotel standard)			■
Amenities: Toiletries; bath/towels; bathrobe; trash bin; storage box; hairdryer (first-tier brands), etc.			■
Glass Door: Single-layer aluminum alloy glass door; solid wood frame; electronic lock			■
Platform: Galvanized steel structure; anti-corrosion wood plank & WPC decking			■



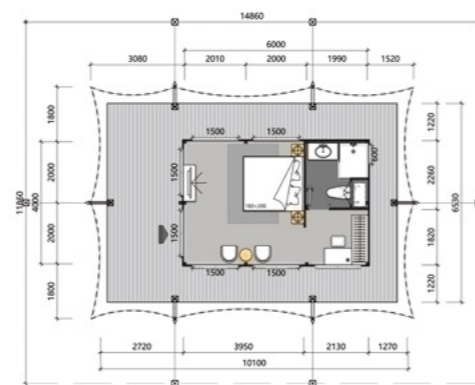
● 标准 ▲ 精装 ■ 豪华

结构: 钢木结构; 含节点及配件	●	▲	■
篷布: PVDF 建筑膜材外帐; 帆布内帐; 含固定篷布配件	●	▲	■
门窗: 帆布门; 防水拉链; 布帘窗户; 含防蚊布纱门窗	●	▲	■
精装卫生间: 外内装饰复合墙体; 防水地面; 实木门; 天花吊顶; 照明灯		▲	■
卫浴设施: 洗漱台 / 镜子; 坐便器; 花洒; 置物架等		▲	■
水电: 上下水系统; 总电箱; 开关插座面板		▲	■
地板: 实木地板; 地脚线		▲	■
家具: 实木床含床垫; 床头柜; 沙发桌椅; 衣物柜; 边柜; 窗帘; 百叶窗帘			■
电器: 空调; 热水器; 灯具			■
床品: 棉被; 枕芯; 四件套等 (酒店标准)			■
用品: 洗漱品; 浴 / 毛巾; 浴袍; 垃圾桶; 储物盒; 吹风机 (一线品牌)			■
玻璃门: 单层铝合金玻璃门; 实木门框; 电子锁			■
平台: 镀锌钢结构; 防腐木地板; 木塑地板			■



LAYOUT

空间布局



R24 DIMENSIONS | 产品参数

- MAIN DIMENSION: 6.5m*9.5m
- INTERIOR AREA: 24.8m²
- INTERIOR DIMENSIONS: 4m*6m
- TERRACE AREA: 37.4m²
- EXTERNAL HEIGHT: 5m/2.4m
- INTERNAL HEIGHT: 3.2m/2.3m

- 主体尺寸: 6.5m*9.5m
- 室内面积: 24.8m²
- 室内尺寸: 4m*6m
- 露台面积: 37.4m²
- 外部高度: 5m/2.4m
- 内部高度: 3.2m/2.3m



R36 DIMENSIONS | 产品参数

- MAIN DIMENSION: 8.8m*10.8m
- INTERIOR AREA: 37.2m²
- INTERIOR DIMENSIONS: 6m*6m
- TERRACE AREA: 58.3m²
- EXTERNAL HEIGHT: 4.7m/2.4m
- INTERNAL HEIGHT: 3.2m/2.3m

- 主体尺寸: 8.8m*10.8m
- 室内面积: 37.2m²
- 室内尺寸: 6m*6m
- 露台面积: 58.3m²
- 外部高度: 4.7m/2.4m
- 内部高度: 3.2m/2.3m

LAYOUT

空间布局

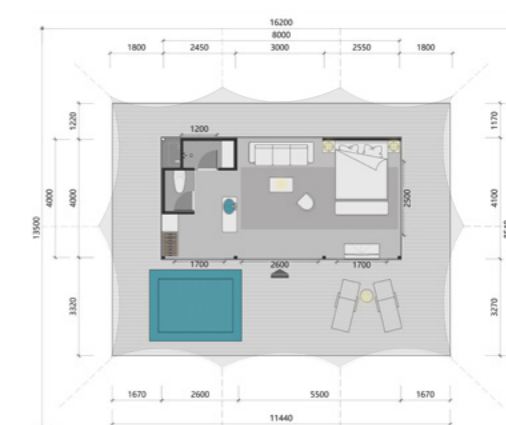
豪帐篷 雅奢造 Luxury tents sourced from YARDS



R60 DIMENSIONS | 产品参数

- MAIN DIMENSION: 9m*14.6m
- INTERIOR AREA: 60m²
- INTERIOR DIMENSIONS: 6m*10m
- TERRACE AREA: 72m²
- EXTERNAL HEIGHT: 5.4m/2.4m
- INTERNAL HEIGHT: 3.2m/2.3m

- 主体尺寸: 9m*14.6m
- 室内面积: 60m²
- 室内尺寸: 6m*10m
- 露台面积: 72m²
- 外部高度: 5.4m/2.4m
- 内部高度: 3.2m/2.3m



RT32 DIMENSIONS | 产品参数

- MAIN DIMENSION: 8.5m*11.4m
- INTERIOR AREA: 33.2m²
- INTERIOR DIMENSIONS: 4.1m*8.1m
- TERRACE AREA: 64.5m²
- EXTERNAL HEIGHT: 5m/2.4m
- INTERNAL HEIGHT: 3.2m/2.3m

- 主体尺寸: 8.5m*11.4m
- 室内面积: 33.2m²
- 室内尺寸: 4.1m*8.1m
- 露台面积: 64.5m²
- 外部高度: 5m/2.4m
- 内部高度: 3.2m/2.3m

LAYOUT

空间布局



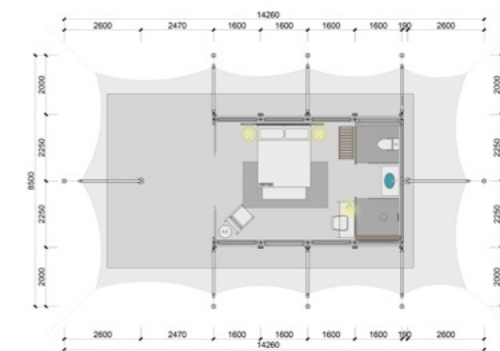
RT40 DIMENSIONS | 产品参数

- MAIN DIMENSION: 8.3m*12.7m
- INTERIOR AREA: 40m²
- INTERIOR DIMENSIONS: 4m*10m
- TERRACE AREA: 64.4m²
- EXTERNAL HEIGHT: 5m/2.4m
- INTERNAL HEIGHT: 3.2m/2.3m

- 主体尺寸: 8.3m*12.7m
- 室内面积: 40m²
- 室内尺寸: 4m*10m
- 露台面积: 64.4m²
- 外部高度: 5m/2.4m
- 内部高度: 3.2m/2.3m

LAYOUT

空间布局



G28 DIMENSIONS | 产品参数

- PROJECTION AREA: 86 m²
- TENT SIZE: 13.1m*8m
- PLATFORM SIZE: 10.4m*5.9m
- INDOOR SIZE: 6.4m*4.5m
- EXTERNAL HEIGHT: 5m
- INTERNAL HEIGHT: 3.2m/2.5m

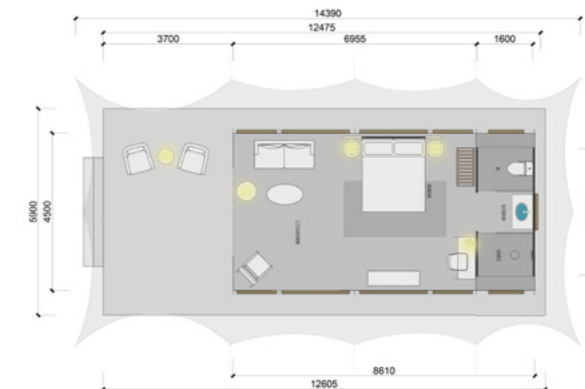
- 投影面积: 86 m²
- 帐篷尺寸: 13.1m*8m
- 平台尺寸: 10.4m*5.9m
- 室内尺寸: 6.4m*4.5m
- 外部高度: 5m
- 内部高度: 3.2m/2.5m



RT87 DIMENSIONS | 产品参数

- MAIN DIMENSION: 11.8m*16.4m
- INTERIOR AREA: 90m²
- INTERIOR DIMENSIONS: 6.7m*13.5m
- TERRACE AREA: 104m²
- EXTERNAL HEIGHT: 5.6m/2.4m
- INTERNAL HEIGHT: 3.2m/2.3m

- 主体尺寸: 11.8m*16.4m
- 室内面积: 90m²
- 室内尺寸: 6.7m*13.5m
- 露台面积: 104m²
- 外部高度: 5.6m/2.4m
- 内部高度: 3.2m/2.3m



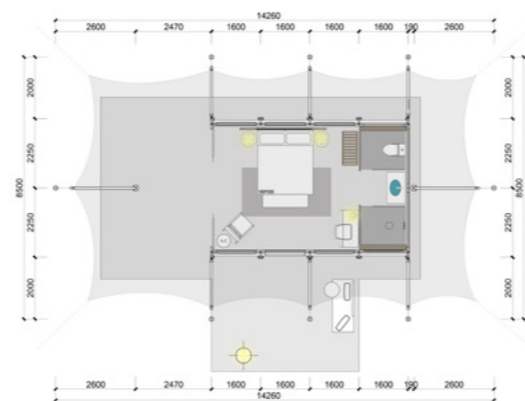
G38 DIMENSIONS | 产品参数

- PROJECTION AREA: 100 m²
- TENT SIZE: 15.8m*8m
- PLATFORM SIZE: 12.5m*5.9m
- INDOOR SIZE: 8.6m*4.5m
- EXTERNAL HEIGHT: 5.2m
- INTERNAL HEIGHT: 3.3m/2.2m

- 投影面积: 100 m²
- 帐篷尺寸: 15.8m*8m
- 平台尺寸: 12.5m*5.9m
- 室内尺寸: 8.6m*4.5m
- 外部高度: 5.2m
- 内部高度: 3.3m/2.2m

LAYOUT

空间布局



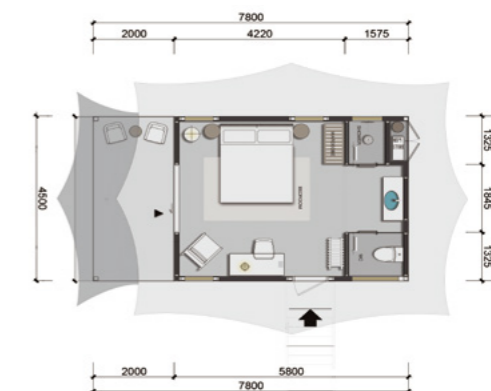
GP28 DIMENSIONS | 产品参数

- PROJECTION AREA: 75 m²
- TENT SIZE: 12.8m*8m
- PLATFORM SIZE: 10.4m*8.9m
- INDOOR SIZE: 6.4m*4.5m
- EXTERNAL HEIGHT: 5m
- INTERNAL HEIGHT: 3.2m/2.5m

- 投影面积: 75 m²
- 帐篷尺寸: 12.8m*8m
- 平台尺寸: 10.4m*8.9m
- 室内尺寸: 6.4m*4.5m
- 外部高度: 5m
- 内部高度: 3.2m/2.5m

LAYOUT

空间布局



T26 DIMENSIONS | 产品参数

- PROJECTION AREA: 54 m² + SUNSHADE 13 m²
- TENT SIZE: 8.9m*7.6m
- PLATFORM SIZE: 7.8m*4.5m
- INDOOR SIZE: 5.8m*4.5m
- EXTERNAL HEIGHT: 4.6m
- INTERNAL HEIGHT: 3.9m/2.5m

- 投影面积: 54 m² + 遮阳幕 13 m²
- 帐篷尺寸: 8.9m*7.6m
- 平台尺寸: 7.8m*4.5m
- 室内尺寸: 5.8m*4.5m
- 外部高度: 4.6m
- 内部高度: 3.9m/2.5m



GP38 DIMENSIONS | 产品参数

- PROJECTION AREA: 93 m²
- TENT SIZE: 15m*8m
- PLATFORM SIZE: 12.5m*8.9m
- INDOOR SIZE: 8.6m*4.5m
- EXTERNAL HEIGHT: 5m
- INTERNAL HEIGHT: 3.2m/2.5m

- 投影面积: 93 m²
- 帐篷尺寸: 15m*8m
- 平台尺寸: 12.5m*8.9m
- 室内尺寸: 8.6m*4.5m
- 外部高度: 5m
- 内部高度: 3.2m/2.5m



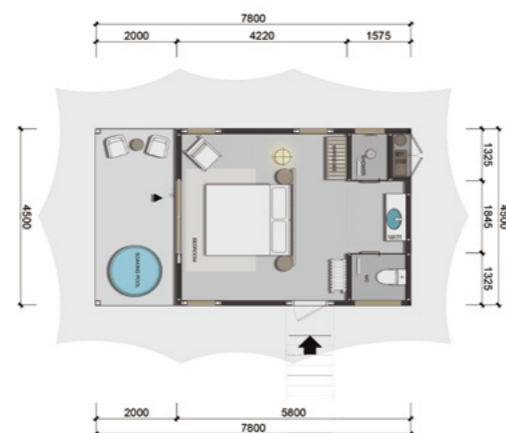
T35 DIMENSIONS | 产品参数

- PROJECTION AREA: 69 m² + SUNSHADE 13 m²
- TENT SIZE: 10m*8m
- PLATFORM SIZE: 9m*5m
- INDOOR SIZE: 7m*5m
- EXTERNAL HEIGHT: 4.6m
- INTERNAL HEIGHT: 3.9m/2.5m

- 投影面积: 69 m² + 遮阳幕 13 m²
- 帐篷尺寸: 10m*8m
- 平台尺寸: 9m*5m
- 室内尺寸: 7m*5m
- 外部高度: 4.6m
- 内部高度: 3.9m/2.5m

LAYOUT

空间布局



TP26 DIMENSIONS | 产品参数

- PROJECTION AREA: 68 m²
- TENT SIZE: 10.8m*7.6m
- PLATFORM SIZE: 7.8M*4.5m+OUTDOOR LOUNGE
- INDOOR SIZE: 5.8m*4.5m
- EXTERNAL HEIGHT: 4.6m
- INTERNAL HEIGHT: 3.9m/2.5m

- 投影面积: 68m²
- 帐篷尺寸: 10.8m*7.6m
- 平台尺寸: 7.8m*4.5m+户外休闲厅
- 室内尺寸: 5.8m*4.5m
- 外部高度: 4.6m
- 内部高度: 3.9m/2.5m

LAYOUT

空间布局



TP50 DIMENSIONS | 产品参数

- PROJECTION AREA: 110 m²
- TENT SIZE: 10.7m*13.5m
- PLATFORM SIZE: 8.5m*10m
- INDOOR SIZE: 5m*10m
- EXTERNAL HEIGHT: 5.2m
- INTERNAL HEIGHT: 4.4m/2.5m

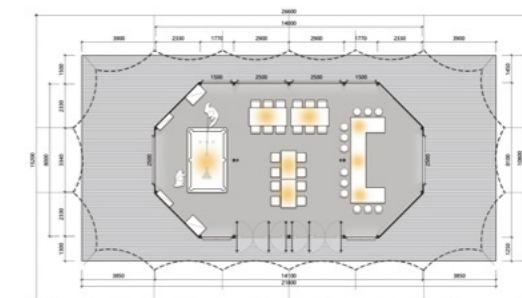
- 投影面积: 110 m²
- 帐篷尺寸: 10.7m*13.5m
- 平台尺寸: 8.5m*10m
- 室内尺寸: 5m*10m
- 外部高度: 5.2m
- 内部高度: 4.4m/2.5m



TP35 DIMENSIONS | 产品参数

- PROJECTION AREA: 82 m²
- TENT SIZE: 12m*8m
- PLATFORM SIZE: 9m*5m+OUTDOOR LOUNGE
- INDOOR SIZE: 7m*5m
- EXTERNAL HEIGHT: 4.3m
- INTERNAL HEIGHT: 3.7m/2.5m

- 投影面积: 82m²
- 帐篷尺寸: 12m*8m
- 平台尺寸: 9m*5m+户外休闲厅
- 室内尺寸: 7m*5m
- 外部高度: 4.3m
- 内部高度: 3.7m/2.5m



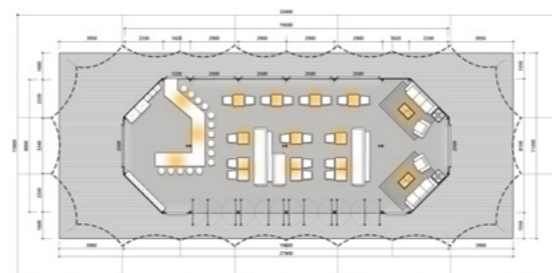
K100 DIMENSIONS | 产品参数

- MAIN DIMENSION: 10.8m*21.8m
- INTERIOR AREA: 103.4m²
- INTERIOR DIMENSIONS: 8.1m*14.1m
- TERRACE AREA: 132m²
- EXTERNAL HEIGHT: 5.5m/2.4m
- INTERNAL HEIGHT: 3.4m/2.3m

- 主体尺寸: 10.8m*21.8m
- 室内面积: 103.4m²
- 室内尺寸: 8.1m*14.1m
- 露台面积: 132m²
- 外部高度: 5.5m/2.4m
- 内部高度: 3.4m/2.3m

LAYOUT

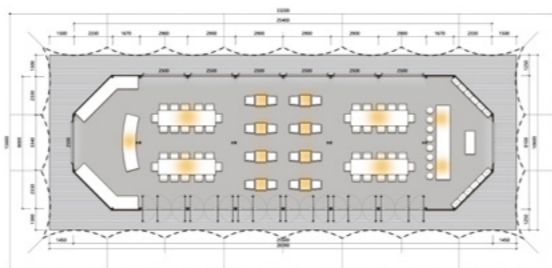
空间布局



K145 DIMENSIONS | 产品参数

- MAIN DIMENSION: 11.2m*27.4m
- INTERIOR AREA: 148m²
- INTERIOR DIMENSIONS: 8.1m*19.6m
- TERRACE AREA: 158.9m²
- EXTERNAL HEIGHT: 5.5m/2.4m
- INTERNAL HEIGHT: 4m/2.3m

- 主体尺寸: 11.2m*27.4m
- 室内面积: 148m²
- 室内尺寸: 8.1m*19.6m
- 露台面积: 158.9m²
- 外部高度: 5.5m/2.4m
- 内部高度: 4m/2.3m



K190 DIMENSIONS | 产品参数

- MAIN DIMENSION: 10.6m*28.4m
- INTERIOR AREA: 195.7m²
- INTERIOR DIMENSIONS: 8.1m*25.5m
- TERRACE AREA: 104.3m²
- EXTERNAL HEIGHT: 5.8m/2.4m
- INTERNAL HEIGHT: 4m/2.3m

- 主体尺寸: 10.6m*28.4m
- 室内面积: 195.7m²
- 室内尺寸: 8.1m*25.5m
- 露台面积: 104.3m²
- 外部高度: 5.8m/2.4m
- 内部高度: 4m/2.3m





TENT HOUSE

帐屋系列



The campsite is located in a place with excellent scenery, and the design incorporates elements of aesthetics and individuality, allowing guests to enjoy luxury while getting close to nature. The tents are available in bimodal and monomodal shapes, with sloped surfaces to effectively drain water and remove snow, keeping them dry and comfortable in all seasons; the 270° panoramic floor-to-ceiling windows are designed to isolate the hustle and bustle and open the door to nature. Adapting to different terrains and reducing the damage to the original landscape, it can meet the different needs of holiday hotels, residential houses and commercial spaces.

我们把星级酒店服务与户外露营氛围融合，营地选址风景绝佳之处，设计融入美学与个性元素，让宾客亲近自然的同时尽享奢华。帐篷有双峰、单峰等造型，坡面设计能有效排水除雪，四季都能保持干爽舒适；270°全景落地窗设计，隔绝喧嚣，开启自然之门。抬眸峰峦巍峨，俯瞰湖波潋滟，风携浪音成曲，晨迎金晖，暮赏熔金，静享自然，镌刻奢居时光。适应不同地形，减少对原始景观破坏，可满足度假酒店、人居住宅、商用空间等不同需求。

Luxury tents sourced from YARDS
豪帐篷 雅奢造



YARDS TENTS

帐屋系列总览

6 large models, nearly 20 products, to meet the needs of various scenarios.

6 大型号, 近 20 款产品, 满足各类场景需求。

Z | Z30 Z64 ZT42 ZT60



X | X32 X75 XP32 XP75



H | H23 H28 HM28 HM58 HX28 HX58



Y | Y105 Y300



M | M40 M74



YM | YM200 YM500



EXTERIOR

Combined with the principle of aerodynamics, it adopts the conical roof design, which can effectively divert the airflow, reduce the impact of strong winds, and avoid the accumulation of rain and snow; the tarpaulin is made of PVDF architectural membrane, and the main structure is made of the combination of the metal frame and the broken-bridge aluminium hollow glass, which has excellent seismic, heat-insulating and sound-insulating properties.

创新空气动力学建筑 更稳固耐用

结合空气动力学原理，采用锥形屋顶设计，有效疏导气流，降低强风影响，避免积雨积雪，更稳固耐用；篷布选用 PVDF 建筑膜材，主体结构采用高强度金属框架与断桥铝中空玻璃相结合，抗震隔热隔音性能极佳。

- PVDF architectural membrane with excellent UV resistance, weather resistance and stain resistance.
- 270° Hollow panoramic floor windows with broken bridge aluminium, sound and heat insulation, enjoy the luxury wide visual field .
- Hot-dip galvanized steel main frame structure, wind-resistant to level 10, guaranteeing 20 years of service life.
- PVDF 建筑膜材，抗紫外线、耐候、自清洁与抗污性能优异
- 270°断桥铝中空全景落地窗，隔音隔热，奢享开阔视野
- 镀锌钢主体框架结构，抗风 10 级，保障 20 年使用寿命





· 产品内部展示 · PRODUCT INTERNAL DISPLAY

INTERIOR

The internal layout of the lodge tent is exquisite, dividing the three zones of sleeping, relaxing and bathing in an orderly manner. With three huge floor-to-ceiling windows, the changing seasons and the stars and rivers are all in the foreground. Comfortable wooden furniture echoes the outdoor properties of the tent, creating a warm and comfortable atmosphere.

星级酒店空间，舒适与自然共融

酒店帐篷内部布局精巧，将睡眠、休闲、卫浴三区有序划分。三面巨幕落地窗，四季更迭、星河万象，皆成窗前景。舒适木质家居与帐篷户外属性相呼应，营造温馨舒适氛围。

- Bathroom system, leisure facilities, intelligent equipment and so on are all available.
- 卫浴系统、休闲设施、智能设备等一应俱全
- Waterproofing system is perfect, water and electricity can be connected upon completion.
- 内部防水体系完善，落成即可通水通电
- Rich optional functions, one-stop matching can be directly opened.
- 提供丰富选配功能，可一站式配齐营业



QUALITY MATERIALS SOURCE OF COMFORT

优质选材 舒适之源



1 PREFAB STRUCTURE

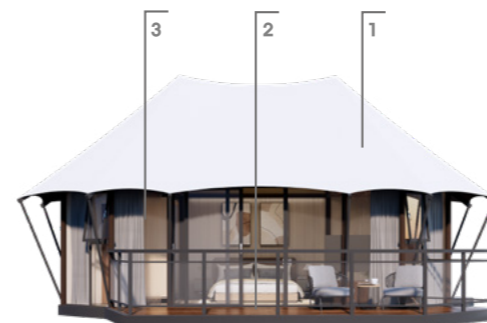
装配式结构

- Outer Roofing: 1050g PVDF Arch. Membrane
外层屋面: 1050G PVDF 建筑膜材
- Inner Roofing: PVC Cloth / Fabric Ceiling / Deco.Panel Ceiling (Opt.)
内层屋面: PVC 布 / 布艺吊顶 / 装饰板吊顶 (可选)
- Main Struct.: Paint-Coated Steel or Wood Struct.
主体结构: 烤漆钢材或木结构

2 PREFAB FLOOR

装配式地面

- Indoor Flooring: Spc Waterproof / Multi-Layer Solid Wood Flooring (Opt.)
室内地板: SPC 防水地板 / 多层实木地板 (可选)
- Load-Bearing Plate: 20mm Cement Bd.
承重板: 20MM 水泥板
- Outdoor Flooring: Anti-Corrosion Wood / Wpc Outdoor Wood Flooring (Opt.)
户外地板: 防腐木地板 / WPC 户外木地板 (可选)
- Platform Struct.: Galvanized Steel
平台结构: 镀锌钢材



WHITE/ 白色

1 MAIN MATERIAL

主体

2 FLOOR MATERIAL

地面

3 WALL MATERIAL

墙体

1 MAIN MATERIAL

主体

Roof Tarpaulin | 屋面篷布



White
白色

Beige
米黄

Khaki
卡其



Light brown
浅咖色

Brown
褐色

Green
墨绿色

Main Structure | 主体结构



深灰
Black

咖啡
Coffee

木色
Wood

2 FLOOR MATERIAL

地面

WPC Flr. / Solid Wood Flr. | WPC 地板 / 实木地板



胡桃木
Walnut

柚木
Shaddock

樟子松木
Scots pine wood

3 WALL MATERIAL

墙体

Glass Curtain Wall | 玻璃幕墙



深灰
Black

咖啡
Coffee

木色
Wood

WPC Exterior Wall Panel | WPC 外墙装饰板



胡桃木
Walnut

柚木
Shaddock

原木色
Natural Wood

3 INTEGRATED WALL

一体化墙体



- Curtain Wall: Thermal Break Aluminum Insulated Glass
幕墙: 断桥铝中空玻璃
- External Wall Panel: WPC Board
外墙板: WPC 木板
- Waterproof Layer: Waterproof and Breathable Membrane
防水层: 防水透气膜
- Insulation Layer: SIP Panel
保温层: SIP 保温板
- Int. Finish Layer: Wd Veneer Pnl
内饰层: 木饰面板

4 INTEGRATED BATHROOM

一体化卫生间



Wall : Waterproof Panel
墙板: 防水饰面板

Door : Glass / Composite Wood (opt.)
门: 玻璃门 / 复合木门 (可选)

Ceiling: Decorative Panel / Exhaust Fan / Lighting Lamp
天花: 饰面板 / 排气扇 / 照明灯

Floor: Waterproof Tray
地面: 防水托盘 / 石纹地砖

Bth. Fix.: Washbasin / Mirror / Toilet / Shower
卫浴设施: 洗手台 / 镜子 / 坐便器 / 花洒

PERFORMANCE

性能特点



Inst. Time: 4 Days
安装时间: 4 天



Service Life: 20 Years
使用年限: 20 年



Wind Resist.: Level 10
抗风等级: 10 级



Flame Retardant: B1
防火阻燃: B1



Clim. Adapt.: -20°C ~ 50°C
适应气候: -20°C ~ 50°C



Moisture-proof & Mildew-proof
防潮防霉



CONFIGURABLE

多元配置可选

● Standard ▲ Hardcover ■ Deluxe

Structure: Steel-aluminum framework, includes nodes & accessories	●	▲	■
Canopy: PVDF membrane; three-layer insulated composite fabric; membrane fixing kits	●	▲	■
Wall: Prefabricated double-faced insulated wall panels; Aluminum alloy insulated glass curtain walls	●	▲	■
Doors & Windows: Aluminum alloy insulated glass; Electronic keypad locks	●	▲	■
Ceiling: Decorative ceiling cloth; curtain rail slot		▲	■
Bathroom: Waterproof wall and floor finishing; glass door; ceiling; lighting		▲	■
Sanitary Ware: Vanity/mirror; toilet; shower; shelves, etc.		▲	■
Water & Electricity: Plumbing System; main electrical box; switch & socket panels; card-activated power		▲	■
Flooring: solid wood floor; baseboard; graphene underfloor heating		▲	■
Furniture: Solid wood bed with mattress; bedside table; sofa table set; wardrobe; side cabinet; curtains; blinds			■
Appliances: Air conditioner; water heater; lighting fixtures			■
Bedding: Quilt; pillow; 4-piece set (hotel standard)			■
Amenities: Toiletries; bath/towels; bathrobe; trash bin; storage box; hairdryer (first-tier brands), etc.			■
Platform: Galvanized steel structure; anti-corrosion wood plank & WPC decking			■
Railing: Stainless steel painted railing bracket; tempered glass			■
PV System: 20-30 kWh Solar Power Generation and Energy Storage All-in-One Unit			■



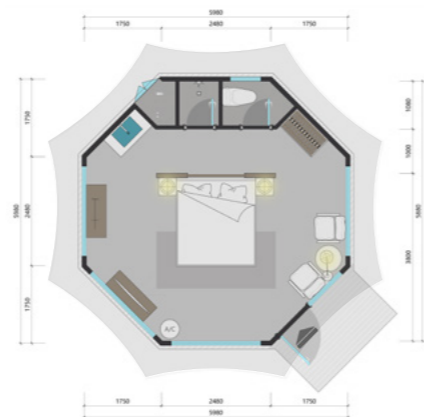
● 标准 ▲ 精装 ■ 豪华

结构: 钢铝结构; 含节点及配件	●	▲	■
篷布: PVDF 外帐膜材; 三层保温复合布; 含锁膜配件	●	▲	■
墙体: 一体化双饰面 SIP 保温墙板; 铝合金中空玻璃幕墙	●	▲	■
门窗: 铝合金中空玻璃; 电子密码锁	●	▲	■
室内吊顶: 吊顶装饰布; 窗帘盒槽		▲	■
精装卫生间: 内外装饰防水墙体; 防水地面; 玻璃门; 天花吊顶; 照明灯		▲	■
卫浴: 洗漱台 / 镜子; 坐便器; 花洒; 置物架等		▲	■
水电: 上下水系统; 总电箱; 开关插座面板; 插卡取电		▲	■
地板: 实木地板; 地脚线; 石墨烯地暖		▲	■
家具: 实木床含床垫; 床头柜; 沙发桌椅; 衣物柜; 边柜; 窗帘; 百叶窗帘			■
电器: 空调; 热水器; 灯具			■
床品: 棉被; 枕芯; 四件套等 (酒店标准)			■
用品: 洗漱品; 浴 / 毛巾; 浴袍; 垃圾桶; 储物盒; 吹风机 (一线品牌)			■
平台: 镀锌钢结构; 防腐木地板; WPC 户外木地板			■
护栏: 不锈钢烤漆护栏支架; 钢化玻璃			■
光伏系统: 20-30 度太阳能发电储能一体机			■



LAYOUT

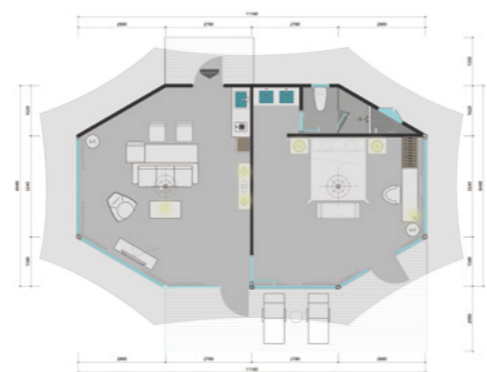
空间布局



Z30 DIMENSIONS | 产品参数

- MAIN DIMENSION: 6m*6m
- INTERIOR AREA: 28.6m²
- INTERIOR DIMENSIONS: 5.9m*5.9m
- TERRACE AREA: 33m²
- EXTERNAL HEIGHT: 6m/2.6m
- INTERNAL HEIGHT: 3.9m/2.5m

- 主体尺寸: 6m*6m
- 室内面积: 28.6m²
- 室内尺寸: 5.9m*5.9m
- 露台面积: 33m²
- 外部高度: 6m/2.6m
- 内部高度: 3.9m/2.5m



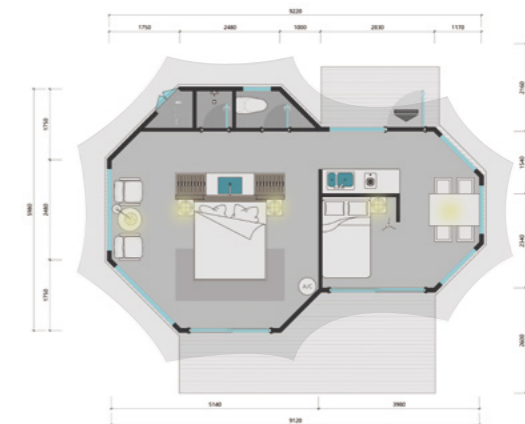
Z64 DIMENSIONS | 产品参数

- MAIN DIMENSION: 6.4m*11.2m
- INTERIOR AREA: 63m²
- INTERIOR DIMENSIONS: 6.3m*11.1m
- TERRACE AREA: 39m²
- EXTERNAL HEIGHT: 6m/2.8m
- INTERNAL HEIGHT: 3.7m/2.7m

- 主体尺寸: 6.4m*11.2m
- 室内面积: 63m²
- 室内尺寸: 6.3m*11.1m
- 露台面积: 39m²
- 外部高度: 6m/2.8m
- 内部高度: 3.7m/2.7m

LAYOUT

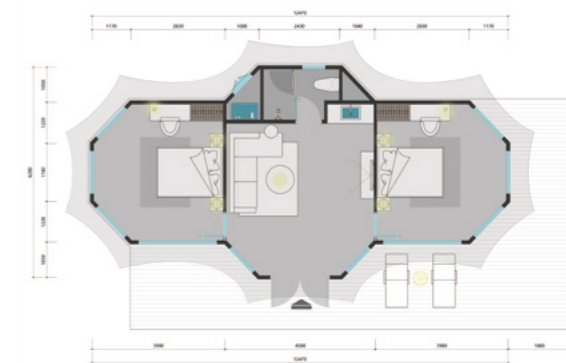
空间布局



ZT42 DIMENSIONS | 产品参数

- MAIN DIMENSION: 6m*9.2m
- INTERIOR AREA: 40.4m²
- INTERIOR DIMENSIONS: 5.9m*9.1m
- TERRACE AREA: 43.7m²
- EXTERNAL HEIGHT: 6m/2.8m
- INTERNAL HEIGHT: 3.9m/2.7m

- 主体尺寸: 6m*9.2m
- 室内面积: 40.4m²
- 室内尺寸: 5.9m*9.1m
- 露台面积: 43.7m²
- 外部高度: 6m/2.8m
- 内部高度: 3.9m/2.7m



ZT60 DIMENSIONS | 产品参数

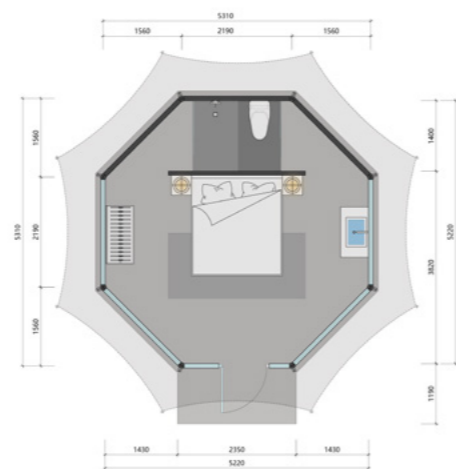
- MAIN DIMENSION: 6.3m*12.5m
- INTERIOR AREA: 60m²
- INTERIOR DIMENSIONS: 6.2m*12.4m
- TERRACE AREA: 35.6m²
- EXTERNAL HEIGHT: 6m/2.8m
- INTERNAL HEIGHT: 3.9m/2.7m

- 主体尺寸: 6.3m*12.5m
- 室内面积: 60m²
- 室内尺寸: 6.2m*12.4m
- 露台面积: 35.6m²
- 外部高度: 6m/2.8m
- 内部高度: 3.9m/2.7m



LAYOUT

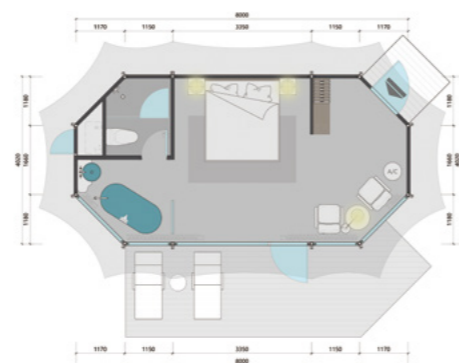
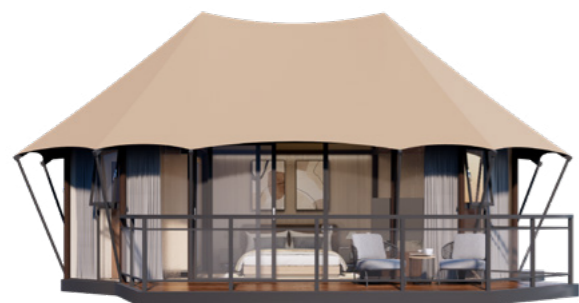
空间布局



H23 DIMENSIONS | 产品参数

- MAIN DIMENSION: 5.3m*5.3m
- INTERIOR AREA: 23m²
- INTERIOR DIMENSIONS: 5.2m*5.2m
- TERRACE AREA: 2.6m²
- EXTERNAL HEIGHT: 5.4m/2.5m
- INTERNAL HEIGHT: 3.7m/2.4m

- 主体尺寸: 5.3m*5.3m
- 室内面积: 23m²
- 室内尺寸: 5.2m*5.2m
- 露台面积: 2.6m²
- 外部高度: 5.4m/2.5m
- 内部高度: 3.7m/2.4m



H28 DIMENSIONS | 产品参数

- MAIN DIMENSION: 3.8m*7.8m
- INTERIOR AREA: 26m²
- INTERIOR DIMENSIONS: 3.7m*7.7m
- TERRACE AREA: 17m²
- EXTERNAL HEIGHT: 5m/2.5m
- INTERNAL HEIGHT: 3.5m/2.4m

- 主体尺寸: 3.8m*7.8m
- 室内面积: 26m²
- 室内尺寸: 3.7m*7.7m
- 露台面积: 17m²
- 外部高度: 5m/2.5m
- 内部高度: 3.5m/2.4m

LAYOUT

空间布局



HM28 DIMENSIONS | 产品参数

- MAIN DIMENSION: 3.8m*7.8m
- INTERIOR AREA: 26m²
- INTERIOR DIMENSIONS: 3.7m*7.7m
- TERRACE AREA: 11m²
- EXTERNAL HEIGHT: 5.3m/2.5m
- INTERNAL HEIGHT: 3.5m/2.4m

- 主体尺寸: 3.8m*7.8m
- 室内面积: 26m²
- 室内尺寸: 3.7m*7.7m
- 露台面积: 11m²
- 外部高度: 5.3 m/2.5m
- 内部高度: 3.5m/2.4m



HM58 DIMENSIONS | 产品参数

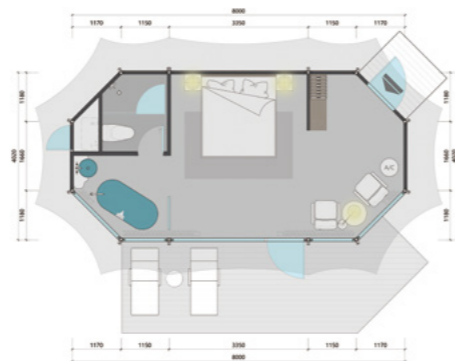
- MAIN DIMENSION: 5.6m*11.3m
- INTERIOR AREA: 57m²
- INTERIOR DIMENSIONS: 5.5m*11.2m
- TERRACE AREA: 17m²
- EXTERNAL HEIGHT: 5.8m/2.5m
- INTERNAL HEIGHT: 2.8m/2.4m

- 主体尺寸: 5.6m*11.3m
- 室内面积: 57m²
- 室内尺寸: 5.5m*11.2m
- 露台面积: 17m²
- 外部高度: 5.8m/2.5m
- 内部高度: 2.8m/2.4m



LAYOUT

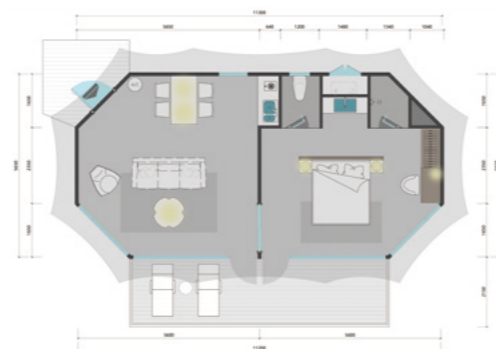
空间布局



HX28 DIMENSIONS | 产品参数

- MAIN DIMENSION: 3.8m*7.8m
- INTERIOR AREA: 25.8m²
- INTERIOR DIMENSIONS: 3.7m*7.7m
- TERRACE AREA: 17.3m²
- EXTERNAL HEIGHT: 5m/2.5m
- INTERNAL HEIGHT: 3.5m/2.4m

- 主体尺寸: 3.8m*7.8m
- 室内面积: 25.8m²
- 室内尺寸: 3.7m*7.7m
- 露台面积: 17.3m²
- 外部高度: 5m/2.5m
- 内部高度: 3.5m/2.4m



HX58 DIMENSIONS | 产品参数

- MAIN DIMENSION: 5.6m*11.3m
- INTERIOR AREA: 56.8m²
- INTERIOR DIMENSIONS: 5.5m*11.2m
- TERRACE AREA: 19m²
- EXTERNAL HEIGHT: 5.2m/2.5m
- INTERNAL HEIGHT: 2.8m/2.4m

- 主体尺寸: 5.6m*11.3m
- 室内面积: 56.8m²
- 室内尺寸: 5.5m*11.2m
- 露台面积: 19m²
- 外部高度: 5.2m/2.5m
- 内部高度: 2.8m/2.4m

LAYOUT

空间布局

豪帐篷 雅奢造 Luxury tents sourced from YARDS



M40 DIMENSIONS | 产品参数

- MAIN DIMENSION: 5m*8m
- INTERIOR AREA: 39m²
- INTERIOR DIMENSIONS: 4.9m*7.9m
- TERRACE AREA: 21.3m²
- EXTERNAL HEIGHT: 5.6m/2.6m
- INTERNAL HEIGHT: 3.5m/2.5m

- 主体尺寸: 5m*8m
- 室内面积: 39m²
- 室内尺寸: 4.9m*7.9m
- 露台面积: 21.3m²
- 外部高度: 5.6m/2.6m
- 内部高度: 3.5m/2.5m



M74 DIMENSIONS | 产品参数

- MAIN DIMENSION: 5.5m*13.5m
- INTERIOR AREA: 72m²
- INTERIOR DIMENSIONS: 5.4m*13.4m
- TERRACE AREA: 60m²
- EXTERNAL HEIGHT: 6m/2.6m
- INTERNAL HEIGHT: 3.8m/2.5m

- 主体尺寸: 5.5m*13.5m
- 室内面积: 72m²
- 室内尺寸: 5.4m*13.4m
- 露台面积: 60m²
- 外部高度: 6m/2.6m
- 内部高度: 3.8m/2.5m



LAYOUT

空间布局



X32 DIMENSIONS | 产品参数

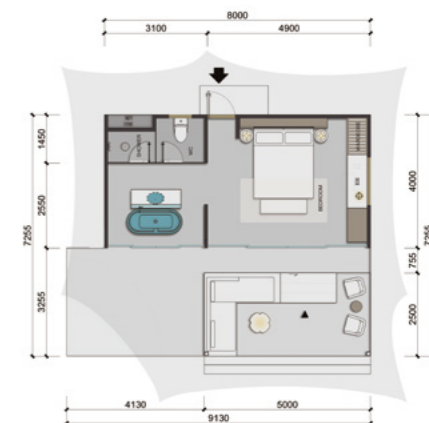
- PROJECTION AREA: 63 m² + SUNSHADE 31 m²
- TENT SIZE: 8m*10.7m
- PLATFORM SIZE: 7.3m*8m
- INDOOR SIZE: 4m*8m
- EXTERNAL HEIGHT: 4.6m
- INTERNAL HEIGHT: 2.85m/2.5m

- 投影面积: 63 m² + 遮阳幕 31 m²
- 帐篷尺寸: 8m*10.7m
- 平台尺寸: 7.3m*8m
- 室内尺寸: 4m*8m
- 外部高度: 4.6m
- 内部高度: 2.85m/2.5m

LAYOUT

空间布局

豪帐篷 雅奢造 Luxury tents sourced from YARDS



XP32 DIMENSIONS | 产品参数

- PROJECTION AREA: 94 m²
- TENT SIZE: 10.9m*10.6m
- PLATFORM SIZE: 7.3m*8m+OUTDOOR LOUNGE
- INDOOR SIZE: 4m*8m
- EXTERNAL HEIGHT: 4.6m
- INTERNAL HEIGHT: 2.85m/2.5m

- 投影面积: 94 m²
- 帐篷尺寸: 10.9m*10.6m
- 平台尺寸: 7.3m*8m+ 户外休闲厅
- 室内尺寸: 4m*8m
- 外部高度: 4.6m
- 内部高度: 2.85m/2.5m



X75 DIMENSIONS | 产品参数

- PROJECTION AREA: 133 m²
- TENT SIZE: 9.1m*18.6m
- PLATFORM SIZE: 9.5m*15m
- INDOOR SIZE: 5m*15m
- EXTERNAL HEIGHT: 5.1m
- INTERNAL HEIGHT: 2.85m/2.5m

- 投影面积: 133 m²
- 帐篷尺寸: 9.1m*18.6m
- 平台尺寸: 9.5m*15m
- 室内尺寸: 5m*15m
- 外部高度: 5.1m
- 内部高度: 2.85m/2.5m



XP75 DIMENSIONS | 产品参数

- PROJECTION AREA: 182 m²
- TENT SIZE: 12.8m*19.8m
- PLATFORM SIZE: 10.2m*18.5m+OUTDOOR LOUNGE
- INDOOR SIZE: 5.5m*16.8m
- EXTERNAL HEIGHT: 5.1m
- INTERNAL HEIGHT: 2.85m/2.5m

- 投影面积: 182 m²
- 帐篷尺寸: 12.8m*19.8m
- 平台尺寸: 10.2m*18.5m+ 户外休闲厅
- 室内尺寸: 5.5m*16.8m
- 外部高度: 5.1m
- 内部高度: 2.85m/2.5m



LAYOUT

空间布局



Y105 DIMENSIONS | 产品参数

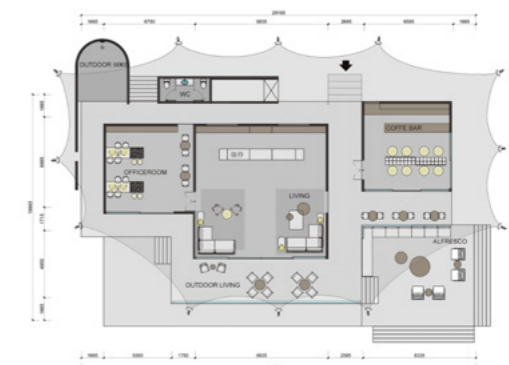
- MAIN DIMENSION: 7m*15m
- INTERIOR AREA: 102.8m²
- INTERIOR DIMENSIONS: 6.9m*14.9m
- TERRACE AREA: 69.8m²
- EXTERNAL HEIGHT: 6.6m/3m
- INTERNAL HEIGHT: 4.9m/2.9m

- 主体尺寸: 7m*15m
- 室内面积: 102.8m²
- 室内尺寸: 6.9m*14.9m
- 露台面积: 69.8m²
- 外部高度: 6.6m/3m
- 内部高度: 4.9m/2.9m

LAYOUT

空间布局

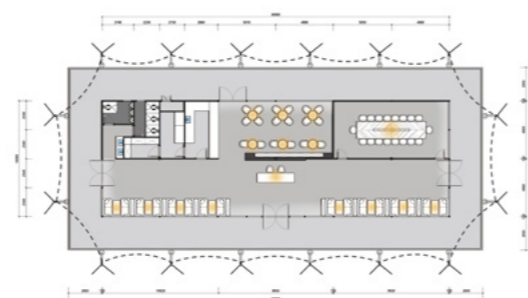
豪帐篷 雅奢造 Luxury tents sourced from YARDS



Y200 DIMENSIONS | 产品参数

- PROJECTION AREA: 750 m²
- TENT SIZE: 16.6m*30.8m
- PLATFORM SIZE: 16.6m*28.6m
- INTERIOR AREA: 200 m²
- EXTERNAL HEIGHT: 7m
- INTERNAL HEIGHT: 5.2m/3.2m

- 投影面积: 750 m²
- 帐篷尺寸: 16.6m*30.8m
- 平台尺寸: 16.6m*28.6m
- 室内面积: 200 m²
- 外部高度: 7m
- 内部高度: 5.2m/3.2m



Y300 DIMENSIONS | 产品参数

- MAIN DIMENSION: 10m*30m
- INTERIOR AREA: 297m²
- INTERIOR DIMENSIONS: 9.9m*29.9m
- TERRACE AREA: 261.6m²
- EXTERNAL HEIGHT: 8.6m/3m
- INTERNAL HEIGHT: 3m/2.9m

- 主体尺寸: 10m*30m
- 室内面积: 297m²
- 室内尺寸: 9.9m*29.9m
- 露台面积: 261.6m²
- 外部高度: 8.6m/3m
- 内部高度: 3m/2.9m



Y500 DIMENSIONS | 产品参数

- PROJECTION AREA: 1300 m²
- TENT SIZE: 30m*52m
- PLATFORM SIZE: 38m*48m
- INTERIOR AREA: 500 m²
- EXTERNAL HEIGHT: 8.2m
- INTERNAL HEIGHT: 5.2m/3.2m

- 投影面积: 1300 m²
- 帐篷尺寸: 30m*52m
- 平台尺寸: 38m*48m
- 室内面积: 500 m²
- 外部高度: 8.2m
- 内部高度: 5.2m/3.2m



TINY HOUSE

铝屋系列



The tiny house, inspired by the classic golden rectangle and the aesthetics of order of the Dutch artist Piet Mondrian, provides a sanctuary of style, comfort and quality for those who pursue a luxurious vacation style, known as the “villa backyard house” “landscape shelter”. Tiny house adopts energy-saving design, strong and durable materials, more environmentally friendly and cost-effective than ordinary houses; performance, multi-layer wall, roof and floor systems, aviation-grade aluminum alloy, earthquake-resistant, wind-resistant and weather-resistant. In terms of performance, it features multi-layer wall, roof and floor systems, and is made of aviation-grade aluminum alloy, possessing superior earthquake resistance, wind resistance and weather resistance. The modular design makes it adapts to a variety of geographic and climatic conditions, and is easy to set up, which greatly reduces construction costs.

铝屋系列，灵感来源于经典的黄金矩形外观和荷兰艺术家彼埃·蒙德里安的秩序美学，为追求奢华度假风的人们提供了一个集时尚、舒适和品质于一体的居住圣地，被称为“别墅后院屋”“景观庇护所”。铝屋系列采用了节能、坚固和耐用的材料，超越了一般认知中的“帐篷”，比普通房屋更环保、更具性价比；性能方面，多层墙面、屋面、地面系统，航空级铝合金，抗震、抗风、耐候性优越；模块化设计，适应各种地理和气候条件，搭建操作简便，大大降低施工成本。

Luxury tents sourced from YARDS

豪帐篷 雅奢造



YARDS TENTS

铝屋系列总览

L 系列



L3

LH 系列



LH5

N 系列



N3

V 系列



V3



L5



LH7



N5



V5



L7



N7



YARDS TENTS

铝屋系列总览

F 系列

NEW



FS

NEW



FR

Tiny House MiC Series 铝屋 MiC 系列





EXTERIOR

Its exterior lines are smooth and lively, with a simple appearance and natural textures. It shines brightly against the backdrop of light and shadow, creating an unparalleled multi-functional space and style tone.

简约至上 大自然的点睛之笔

外观线条流畅明快，简约的外观和自然的纹理，光与影的衬托下熠熠生辉，塑造无与伦比的多功能性空间和风格调性。

- Modern style, aluminum mesh panels are available in a variety of color options.
- 2MM aviation grade aluminum alloy, lightweight, high hardness.
- The main body adopts 100*100*4.0mm hot-dip galvanized steel structure.
- Broken-bridge aluminum insulating glass system doors and windows.
- 现代而优雅的风格，网拉铝板或实木等多重材料、颜色装饰
- 2MM 航空级铝合金，轻质高硬度、耐腐蚀
- 主体采用 100*100*4.0mm 热镀锌钢结构
- 断桥铝中空玻璃系统门窗，YARDS 专利框架连接件



· 产品外观展示 · PRODUCT APPEARANCE DISPLAY



· 产品内部展示 · PRODUCT INTERNAL DISPLAY

INTERIOR

Graphite design is a modern, minimalist interior design concept that emphasizes natural wood tones. The design features a bright and comfortable atmosphere with a balanced layout and practicality at its core. Natural materials create a warm and comfortable elegant environment. There are two models to choose from.

品质为居 舒适与高雅兼备

室内采用现代简约的设计理念，强调自然的木质色调。该设计以明亮舒适的氛围为特色，以均衡的布局和实用性为核心，奢华软装与简约硬装交融焕新，营造出温馨舒适的居住环境。

- 1-2 bedrooms, 1 living room, 1 bathroom, square layout, high space utilization rate.
 - Five-star hotel bathroom system, shower, wash, toilet three-zone separation.
 - Interior soft furnishings optional, one-stop matching, to meet the needs of different styles of decoration.
 - Powerful storage system in the bedroom, bathroom, and kitchen to accommodate washing machine, refrigerator, and oven.
- 1-2室1厅1卫，方正布局，空间利用率高
 - 五星级卫浴系统，淋浴、洗漱、如厕三区分离
 - 室内软装选配式，可一站式配齐，满足不同装修风格需求
 - 卧室、卫浴、厨房设置强大收纳系统，洗衣机、冰箱、烤箱通通容纳

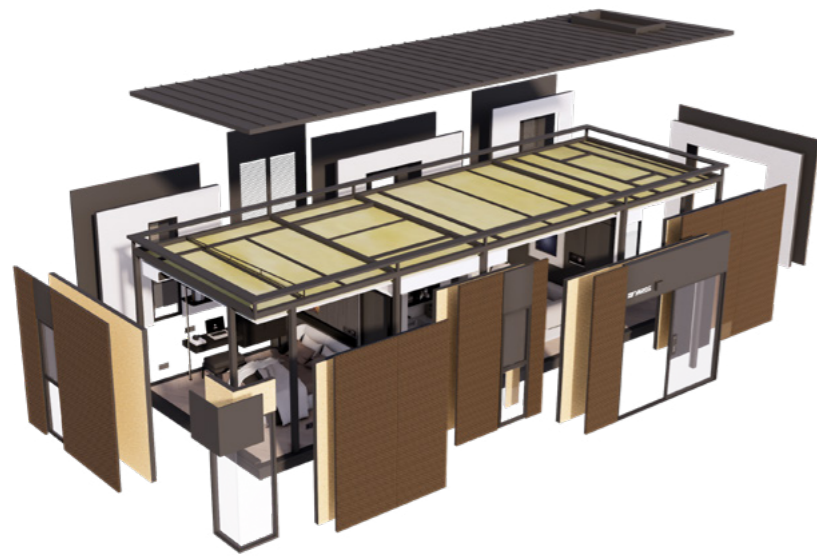


DESIGN · QUALITY AND FASHION COEXIST

设计 · 品质与时尚共存

HOME · WHOLE HOUSE LUXURY CUSTOMIZATION

家居 · 全屋高定 质享奢华



1 PREFAB STRUCTURE

装配式结构

- Outer Roofing: 45mm Comp. Alu Alloy Roof Pnl
外层屋面: 45MM 复合铝合金屋面板
- Inner Roofing: Wprf. Layer / Rock Wool Insul. Layer / Alu Honeycomb Pnl Ceiling
内层屋面: 防水层 / 岩棉保温层 / 铝蜂窝板吊顶
- Main Struct.: Paint-Coated Steel
主体结构: 烤漆钢材

2 PREFAB FLOOR

装配式地面

- Indoor Flooring: Spc Waterproof / Multi-Layer Solid Wood Flooring (Opt.)
室内地板: SPC 防水地板 / 多层实木地板 (可选)
- Load-Bearing Plate: 20mm Cement Bd.
承重板: 20MM 水泥板
- Outdoor Flooring: Anti-Corrosion Wood / Wpc Outdoor Wood Flooring (Opt.)
户外地板: 防腐木地板 / WPC 户外木地板 (可选)
- Platform Struct.: Galvanized Steel
平台结构: 镀锌钢材

3 INTEGRATED WALL

一体化墙体



- Curtain Wall: Thermal Break Aluminum Insulated Glass
幕墙: 断桥铝中空玻璃
- External Wall Panel: 2MM Alu Alloy Plate
外墙板: 2MM 铝合金板
- Waterproof Layer: Waterproof and Breathable Membrane
防水层: 防水透气膜
- Insulation Layer: SIP Panel
保温层: SIP 保温板
- Int. Finish Layer: Alu Alloy Wood Veneer Panel
内饰层: 铝合金木饰面板

4 INTEGRATED BATHROOM

一体化卫生间



- Wall: Waterproof Panel
墙板: 防水饰面板
- Door: Glass / Composite Wood (opt.)
门: 玻璃门 / 复合木门 (可选)
- Ceiling: Decorative Panel / Exhaust Fan / Lighting Lamp
天花: 饰面板 / 排气扇 / 照明灯
- Floor: Waterproof Tray
地面: 防水托盘 / 石纹地砖
- Bth. Fix.: Washbasin / Mirror / Toilet / Shower
卫浴设施: 洗手台 / 镜子 / 坐便器 / 花洒

PERFORMANCE

性能特点



Inst. Time: 4 Days
安装时间: 4天



Service Life: 30 Years
使用年限: 30年



Wind Resist.: Level 12
抗风等级: 12级



Seismic Resist.: Level 8
抗震等级: 8级



Clim. Adapt.: -30°C ~ 50°C
适应气候: -30°C ~ 50°C



Moisture-proof & Mildew-proof
防潮防霉



拉网铝板 / Aluminum Mesh Panel

1 MAIN MATERIAL

主体

2 FLOOR MATERIAL

地面

3 WALL MATERIAL

墙体



实木 / Solid Wood



PVC 材料 / PVC Material

1 MAIN MATERIAL

主体



雅典金
Athens gold



深灰色
Dark gray



咖啡色
Coffee color

2 FLOOR MATERIAL

地面

WPC Flr. / Solid Wood Flr. | WPC 地板 / 实木地板



胡桃木
Walnut



柚木
Shaddock

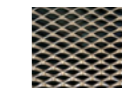


樟子松木
Scots pine wood

3 WALL MATERIAL

墙体

拉网铝板 | Aluminum Mesh Panel



古铜金
Bronze gold

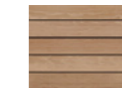


银灰
Silver gray



罗蔓紫
Romany purple

实木 | Solid Wood

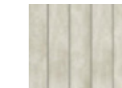


红雪松
Red cedar



樟子松
Scotch pine

PVC 材料 | PVC Material



乳香色
Mastic



无烟煤
Anthracite

石材 | Stone Slab



流水石
Flowing Water Stone



自然面
Natural Surface



砖块石板
Brick Slab



CONFIGURABLE

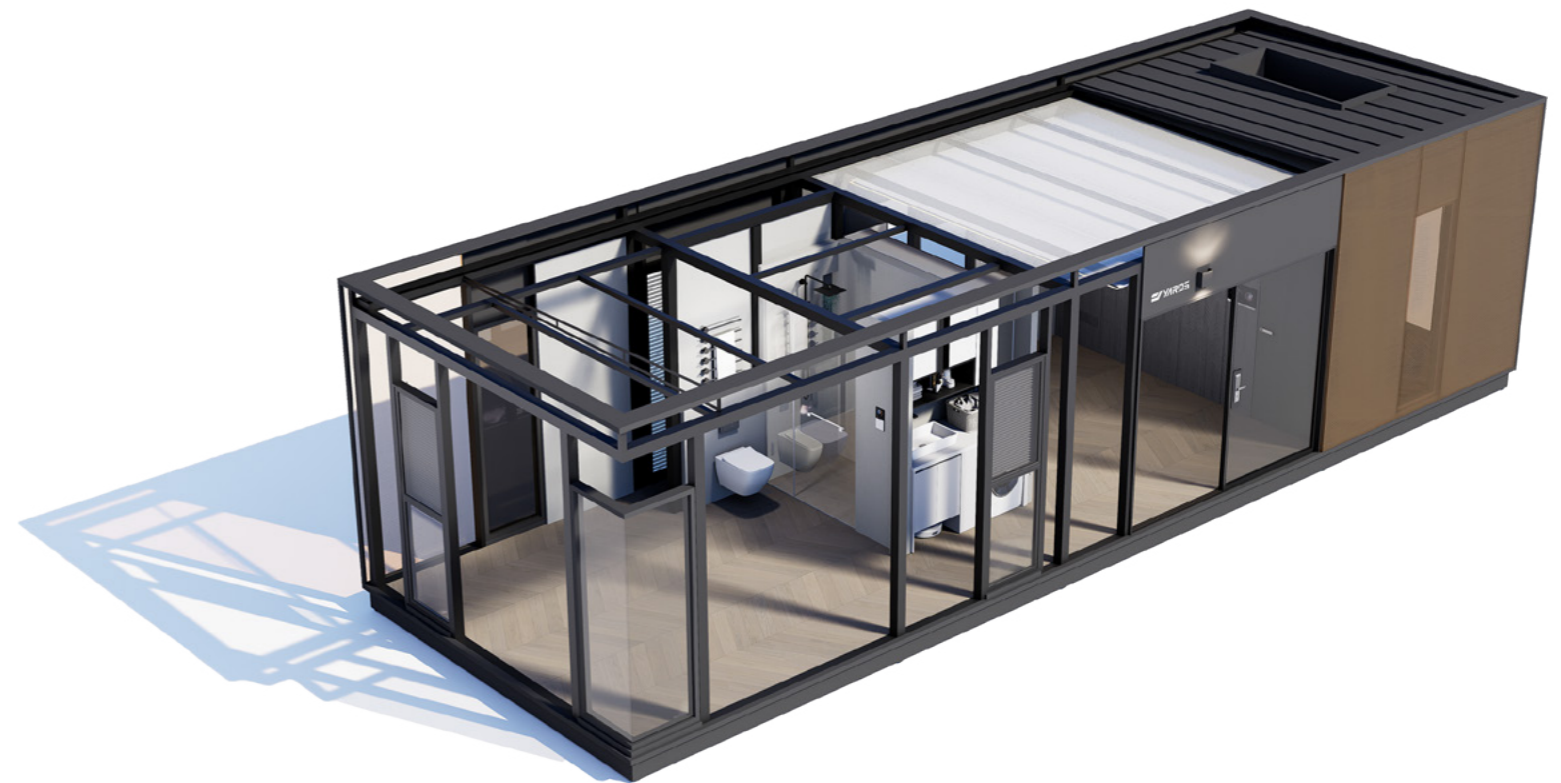
多元配置可选

● Standard ▲ Hardcover ■ Deluxe

Structure: Steel-aluminum framework, includes nodes & accessories	●	▲	■
Roof: Prefabricated insulated aluminum alloy roof	●	▲	■
Walls: Prefabricated insulated walls; aluminum alloy exterior panels; Aluminum alloy insulated glass curtain wall	●	▲	■
Doors & Windows: Aluminum alloy insulated glass; Electronic keypad locks	●	▲	■
Interior Wall: Full-house laminated aluminum panels; aluminum honeycomb ceiling		▲	■
Bathroom: Aluminum wall cladding for interior and exterior decoration; waterproof flooring; glass door; ceiling; lighting		▲	■
Sanitary Ware: Vanity/mirror; toilet; shower; shelves, etc.		▲	■
Glass Curtain Wall: LOW-E insulated glass		▲	■
Window and Door Accessories: Sliding Screen Doors/Screens		▲	■
Water & Electricity: Plumbing System; main electrical box; switch & socket panels; card-activated power		▲	■
Flooring: solid wood floor; baseboard; graphene underfloor heating		▲	■
Furniture: Solid wood bed with mattress; bedside cabinet; sofa & tea table set; wardrobe; desk; kitchen cabinet; laundry storage cabinet; curtain; blinds			■
Appliances: Air conditioner; water heater; full-house lighting; smart system; electric curtains; voice control			■
Bedding: Quilt; pillow; 4-piece set (hotel standard)			■
Amenities: Toiletries; bath/towels; bathrobe; trash bin; storage box; hairdryer (first-tier brands), etc.			■
Outdoor Balcony: Galvanized steel structure; WPC decking; aluminum alloy awning; electric sunshade curtain at entrance			■
PV System: 20~30 kWh Solar Power Generation and Energy Storage All-in-One Unit			■

● 标准 ▲ 精装 ■ 豪华

结构: 钢铝结构; 含节点及配件	●	▲	■
屋面: 装配式铝合金隔热屋面	●	▲	■
墙体: 装配式保温墙; 外立面铝合金板; 铝合金中空玻璃幕墙	●	▲	■
门窗: 铝合金中空玻璃; 电子密码锁	●	▲	■
内饰墙板: 整屋覆膜铝墙板; 铝蜂窝天花板		▲	■
精装卫生间: 内外装饰铝墙体; 防水地面; 玻璃门; 天花吊顶; 照明灯		▲	■
卫浴: 洗漱台 / 镜子; 坐便器; 花洒; 置物架等		▲	■
玻璃幕墙: LOW-E 中空玻璃		▲	■
门窗配套: 推拉网纱门 / 纱窗		▲	■
水电: 上下水系统; 总电箱; 开关插座面板; 插卡取电		▲	■
地板: 实木地板; 地脚线; 石墨烯地暖		▲	■
家具: 实木床含床垫; 床头柜; 沙发桌椅; 衣物柜; 书桌台; 橱房柜; 洗衣区储物柜; 窗帘; 百叶窗帘			■
电器: 空调; 热水器; 全屋灯具; 智能系统; 电动窗帘; 语音功能			■
床品: 棉被; 枕芯; 四件套等 (酒店标准)			■
用品: 洗漱品; 浴 / 毛巾; 浴袍; 垃圾桶; 储物盒; 吹风机 (一线品牌)			■
户外阳台: 镀锌钢结构; 木塑地板; 铝合金遮阳棚; 入户门电动遮阳帘			■
光伏系统: 20~30 度太阳能发电储能一体机			■





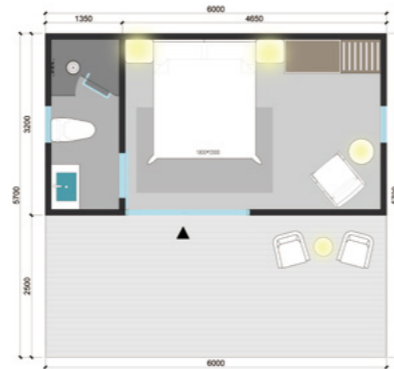
LAYOUT

空间布局

L3



- AREA: 17m²
- TERRACE: 15m²
- SIZE: 3.2 X 6m
- EXT./INT: 3.4m/2.8m



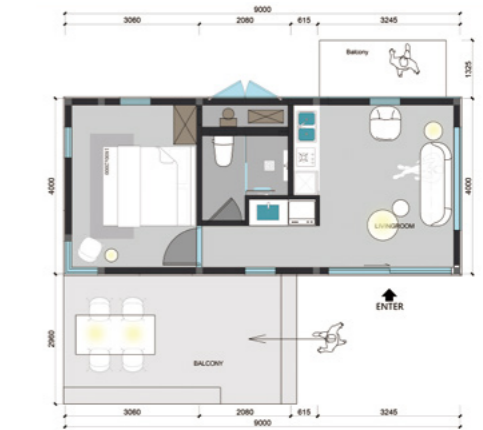
LAYOUT

空间布局

LH5



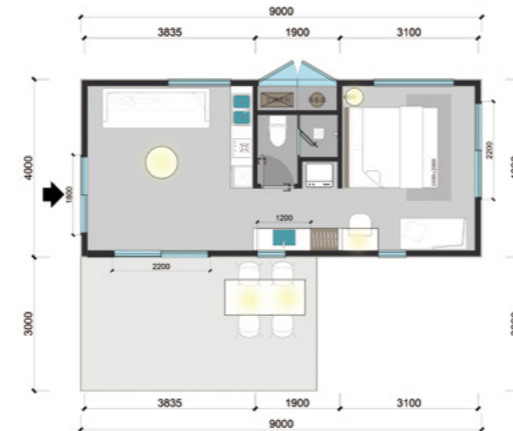
- AREA: 32m²
- TERRACE: 16m²
- SIZE: 4 X 9m
- EXT./INT: 3.4m/2.8m



L5



- AREA: 32m²
- TERRACE: 16m²
- SIZE: 4 X 9m
- EXT./INT: 3.4m/2.8m



LH7



- AREA: 43m²
- TERRACE: 25m²
- SIZE: 4 X 12m
- EXT./INT: 3.4m/2.8m



L7



- AREA: 43m²
- TERRACE: 41m²
- SIZE: 4 X 12m
- EXT./INT: 3.4m/2.8m



L - MINIMALIST LUXURY

L-形筒内奢

Minimalist Rectangular Design
极简矩形外观

Customizable Exterior Finishes
外观饰面支持多元选配

Durable & Luxurious Build
兼顾耐用性与奢华美观

Top 5 Popular Floor Plans
5大热门户型选择

Modular & Rapid Assembly
装配式模块速装

Versatile Spatial Layouts
多功能化空间布局



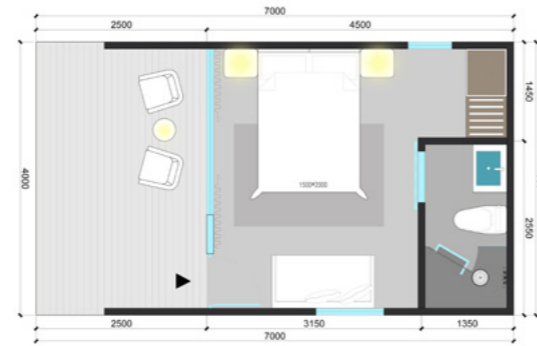
LAYOUT

空间布局

N3



- AREA: 17m²
- TERRACE: 10m²
- MAIN: 4 X 6m
- SPACE: 3.8 X 4.5m
- EXT. HT.: 3.5m
- INT. HT.: 2.3m



LAYOUT

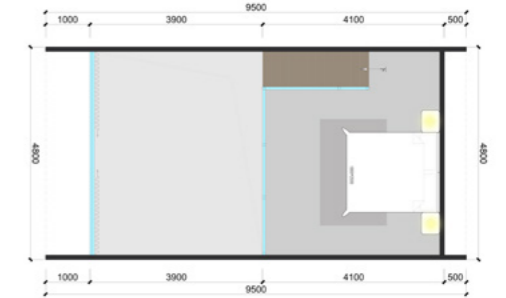
空间布局

豪帐篷 雅奢造 Luxury tents sourced from YARDS

N7



- AREA: 53m²
- TERRACE: 8.4m²
- MAIN: 4.8 X 8m
- SPACE: 4.6 X 7.8m
- EXT. HT.: 6.2m
- INT. HT.: 3.2m



N5



- AREA: 28m²
- TERRACE: 6m²
- MAIN: 4 X 9m
- SPACE: 3.8 X 7.3m
- EXT. HT.: 3.9m
- INT. HT.: 2.2m



N-STRUCTURAL PRECISION

N-形制精工

Minimalist design with pitched roof
极简外观融合坡屋顶设计

High-performance sound/thermal insulation
高性能结构材质隔音隔热

Diverse windows for light and views
多样化门窗设计引光纳景

Single/duplex layout options
多元户型涵盖单层 / 复式结构

Prefabricated modular rapid assembly
装配式模块化速装工艺

The interior space adapts to diverse scenarios
内部空间适配多元场景

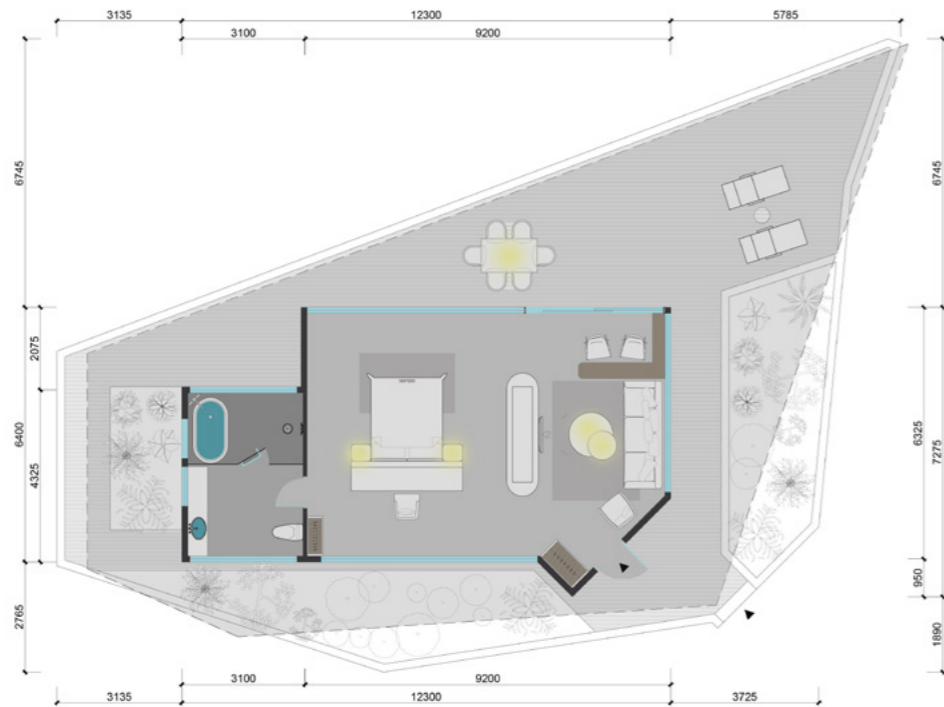


LAYOUT

空间布局

FS

- AREA: 72m²
- MAIN: 21 X 14m
- EXT. HT.: 5.3m
- TERRACE: 137m²
- SPACE: 6.2 X 12.1m
- INT. HT.: 3.7m



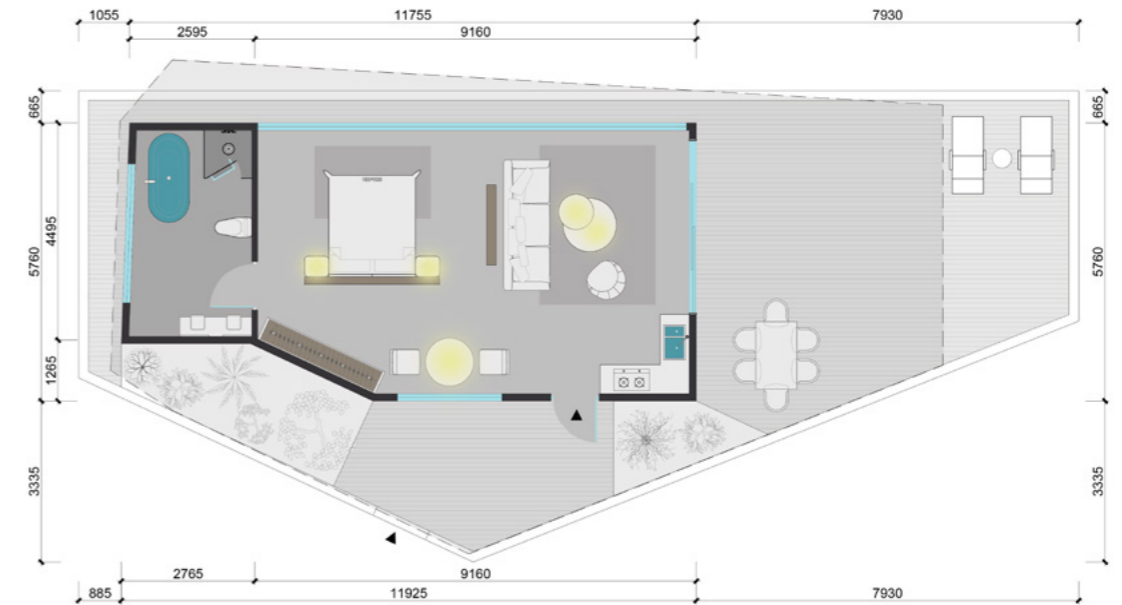
LAYOUT

空间布局

豪帐篷 雅奢造 Luxury tents sourced from YARDS

FR

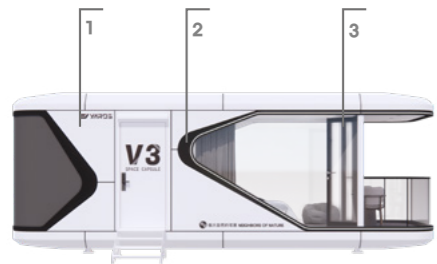
- AREA: 65m²
- MAIN: 10.2 X 17.2m
- EXT. HT.: 4.3m
- TERRACE: 92m²
- SPACE: 5.6 X 11.8m
- INT. HT.: 3.2m





DESIGN · CUSTOMIZATION, MULTIVARIABLE

设计·个性定制化, 多元风格选择



米白 / Beige

1 ALUMINUM FACADE PANELS
外立面铝板

2 ORNAMENTAL BORDER
饰边条

3 DOOR & WINDOW
门窗



银灰 / Silver gray



深海蓝 / Deep sea blue

1 ALUMINUM FACADE PANELS
外立面铝板



米白
Beige



银灰
Silver gray



深海蓝
Deep sea blue

2 ORNAMENTAL BORDER
饰边条



黑色
Black



深灰
Dark gray



杏橙
Apricot orange

3 DOOR & WINDOW
门窗



黑色
Black



深灰
Dark gray



咖啡
Coffee

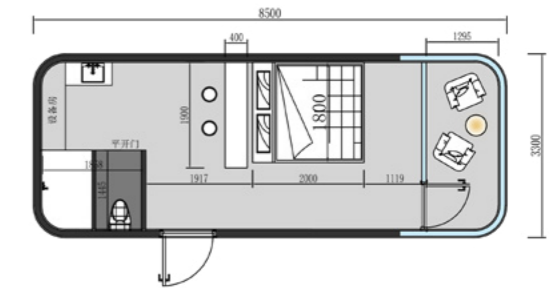
LAYOUT

空间布局

豪帐篷 雅奢造 Luxury tents sourced from YARDS

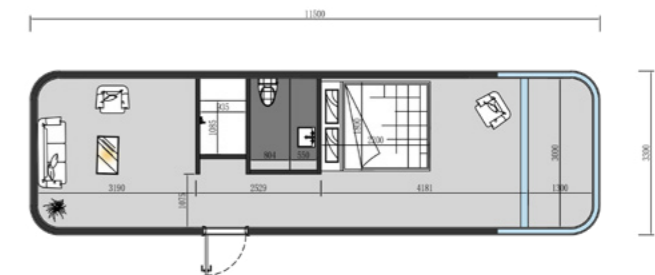
V3

- 1室1卫1厅
- 8.5 X 3.3 X 3.2 m



V5

- 1室1卫1厅1厨
- 11.5 X 3.3 X 3.2 m





SAFARI TENTS CASE

Yalong Bay Campground, Sanya City
三亚市亚龙湾营地

Liangshuiwan Planting Ecological Park, Ji County, Tianjin
天津市蓟县靓水湾种植生态园

Jinhua City Hengdian Mengquan Valley Qigu Wild Luxury Tent Hotel
金华市横店梦泉谷栖谷野奢帐篷酒店

Longnan City, Huixian County, Jiangluo Town Rural Revitalization Project
陇南市徽县江洛镇乡村振兴项目

Yichang City, Zigui County, Jiwanxi Town Cultural Tourism Project
宜昌市秭归县九畹溪镇文旅项目



Pan County Mountain Wilderness Camping Tent Base
盘州市在山野露营帐篷基地

Deerleap Glamping Dome, Ontario, Canada
加拿大安大略省鹿跃露营穹顶帐篷营地

Xinzhong Town Tourism and Sightseeing Project, Zhengzhou City
郑州市新中镇旅游观光项目

Starry Sky Tent Hotel in Al Ain Desert Camp, United Arab Emirates
阿联酋艾因沙漠营地星空帐篷酒店





STRETCH TENTS CASE

Shangluo City Shanyang Tianpeng Mountain Forest Health Resort Base

商洛市山阳天蓬山寨森林康养基地

Hulunbeier Zhalantun City Tent Campground

呼伦贝尔扎兰屯市帐篷营地

Gannan Zhili Guan Tourist Resort, Lanzhou City

兰州市甘南治力关旅游度假区

DUNE Sand Dune Resort Hotel, Kumtag Desert, Turpan, Xinjiang

新疆吐鲁番库木塔格沙漠 DUNE 沙丘度假酒店

Lijiang City Lashi Lake · Flower Language Mountain Sea Art Garden

丽江市拉市海·花语山海艺术花园



Yarlung Tsangpo Grand Canyon Project in Nyingchi City

林芝市雅鲁藏布大峡谷项目

Hotan City Camp Tent Project

和田市营地帐篷项目

Dazhou City Sifangshan Forest Camping Base

达州市四方山林露营基地





TENT HOUSE CASE

Shantou City Ma Yu Island
Traveler Hostel
汕头市妈屿岛旅民宿

Xinjiang Karajun Endless Wilderness
Luxury Camp Hotel
新疆喀拉峻无垠之境野奢营地酒店

Camping Base in Huangmaojian Forest
Park, Xinyang City
信阳市黄毛尖森林公园露营地

Zhoushan City, Miye Xianzong · Hai
Dongfang Villa Seaside Resort
舟山市觅野仙踪·海东方 VILLA 海景度假美宿



Dunhuang Mo Ye Xinghe Quanyunju Desert
Eco Camp Hotel
敦煌漠野星河泉韵居沙漠生态营地酒店

Gongmu Mountain Cultural Tourism Project,
Ningming County, Chongzuo City
崇左市公母山文旅项目

Bole City Sayram Lake Tent Guesthouse
博乐市赛里木湖帐篷民宿

Zhiduo County Yangtze River First Bend Tent Hotel
治多县长江第一湾帐篷酒店





TINY HOUSE CASE

Hotel Berghof Westkamp, Austria
奥地利 - 伯格霍夫西坎普酒店

Faralis Stella Resort, Italy
意大利 - 法拉里斯泰拉度假酒店

Bulgaria Velingrad Resort Project
保加利亚 - 韦林格勒市度假村项目

Kuwait City Hotel Project, Kuwait
科威特 - 科威特城酒店项目

Wyndham City Resort Hotel, Australia
澳大利亚 - 温德姆市度假酒店



Amsterdam Resort Hotel Project,
Netherlands
荷兰 - 阿姆斯特丹度假酒店项目

GREEN Camping, a camping site adjacent
to Lhasa's Dazhi District
拉萨达孜区隔邻露营地 GREEN Camping





LARGE-SCALE PROJECTS

Hengdian Mengquan Valley Tent Hotel View
横店梦泉谷帐篷酒店实景

Kerala Sprawl Wilderness Camp Hotel
喀拉峻无垠之境野奢营地酒店

Shijiazhuang Panglong Lake Happy Hub – Yishui Camping House
石家庄蟠龙湖欢乐汇 – 亦水营舍

Royal Cyprus Resort Hotel
塞浦路斯皇家度假酒店



CONTACT US

联系我们

YARDS ARCHITECTURAL TECHNOLOGY CO., LTD.
广东雅奢建筑科技有限公司

☎ 0086 20 3900 2585

☎ 400-9988-688

🌐 www.yards.com.cn

✉ info@yardstent.com

📍 No. 7, Dong Er Lu, Hengli Town,
Nansha District, Guangzhou
广州市南沙区横沥镇东二路 7 号

This gallery is for illustrative reference only. Due to photography and printing reasons, the color and texture of the product may be different from the actual product, please refer to the actual product.

本图册仅作参考。因拍照和印刷原因，产品颜色、纹理可能与实物存在差异，请以产品实物为准。

Pictures may contain non-standard configuration parts, product technical parameters and business terms may change due to regulatory adjustments, please be sure to contact the business manager for detailed information before purchase.

所含图片可能包含非标准配置部件，产品技术参数及商务条款可能因法规调整而变更，购买前请务必联系业务经理获取详细信息。

Jumeitents

Yards Architectural Technology



扫码关注「雅奢集团」
官方公众号了解
更多资讯



扫码关注「雅奢帐篷」
官方抖音号了解
更多资讯



扫码查看「雅奢商城」
小程序了解更多资讯

Welcome to follow the official account for more brand news
欢迎关注雅奢官方账号获取更多品牌动态